

CONTENTS

P
1-2 Single port transformer
modules 12Pin series

P
3-5 Single port transformer
modules 16Pin series

P
6-7 Dual port transformer
modules 20Pin series

P
8-10 Quad port transformer
modules 40Pin series

P
11-12 Transformer Module
16Pin series

P
13 Transformer Module
24Pin series

P
14 Single port transformer
modules 18Pin series

P
15-17 Single port transformer
modules 24Pin series

P
18-19 Dual port transformer
modules 48Pin series

P
20-21 Quad port transformer
modules 72Pin series

P
22 Quad port transformer
modules 88Pin series

P
23 Quad port transformer
modules 96Pin series

P
24 Five port transformer
modules 90Pin series

P
25-35 T1/E1/CEPT/ISDN-Pri
Transformer Module

P
36-37 XDSL Magnetics

P
38-39 RJ+45

Single port transformer modules 12Pin series

FEATURES

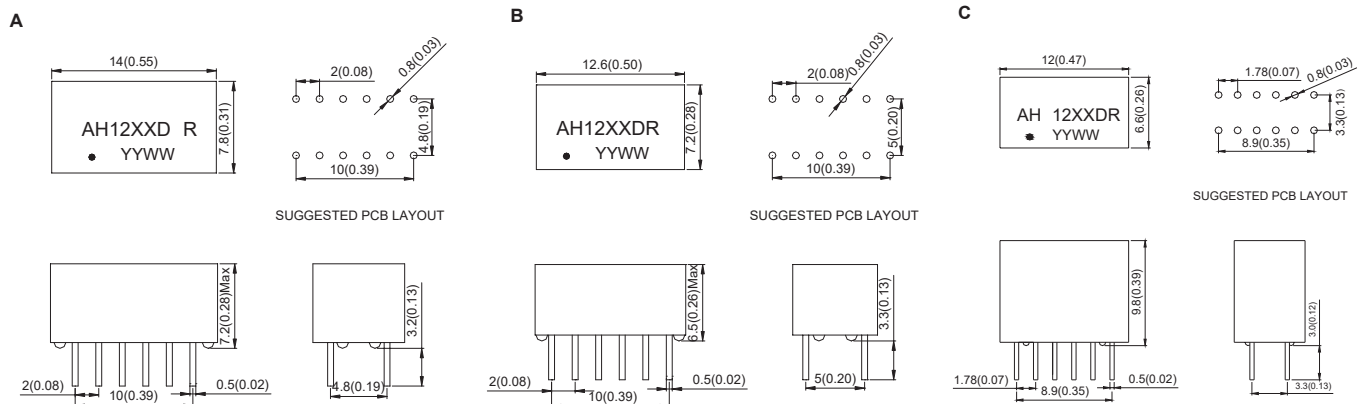
Compliant with IEEE 802.3 standard.
Primary inductance:350uH Min.@ 100KHz,0.1Vrms,8mA
RoHS compliant



Electrical Specification@25°C Operating Temperature 0 to 70°C

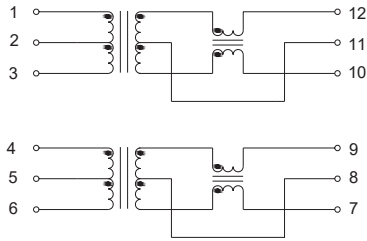
Part Number	Insertion Loss (dB Max) 1-100MHz	Return Loss (dB Typical) MHz				CMRR (dB Min) MHz		Cross talk (dB Min) MHz		Isolation Voltage (Vrms Min)	Package
		1-30	40	50	60-80	0.1-60	60-100	0.1-60	60-100		
AH1201DR	-1.0	-18	-14.4	-13.1	-12	-42	-40	-40	-38	1500	A
AH1202DR	-1.0	-18	-14.4	-13.1	-12	-42	-40	-40	-38	1500	A
AH1203DR	-1.0	-18	-14.4	-13.1	-12	-42	-40	-40	-38	1500	A
AH1204DR	-1.0	-18	-14.4	-13.1	-12	-42	-40	-40	-38	1500	A
AH 1205DR	-1.0	-18	-14.4	-13.1	-12	-42	-40	-40	-38	1500	A
AH 1206DR	-1.0	-18	-14.4	-13.1	-12	-42	-40	-40	-38	1500	A
AH 1207DR	-1.0	-18	-14.4	-13.1	-12	-42	-40	-40	-38	1500	B
AH 1208DR	-1.0	-18	-14.4	-13.1	-12	-42	-40	-40	-38	1500	B
AH 1209DR	-1.0	-18	-14.4	-13.1	-12	-42	-40	-40	-38	1500	B
AH 1210DR	-1.0	-18	-14.4	-13.1	-12	-42	-40	-40	-38	1500	B
AH 1211DR	-1.0	-18	-14.4	-13.1	-12	-42	-40	-40	-38	1500	B
AH 1212DR	-1.0	-18	-14.4	-13.1	-12	-42	-40	-40	-38	1500	B
AH 1213DR	-1.0	-18	-14.4	-13.1	-12	-42	-40	-40	-38	1500	A
AH 1214DR	-1.0	-18	-14.4	-13.1	-12	-42	-40	-40	-38	1500	B
AH 1215DR	-1.0	-18	-14.4	-13.1	-12	-42	-40	-40	-38	1500	A
AH 1216DR	-1.0	-18	-14.4	-13.1	-12	-42	-40	-40	-38	1500	C

Dimension : mm[inch]+/-0.25[0.01]

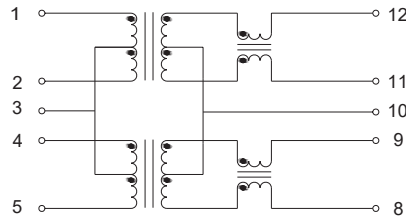


Schematic

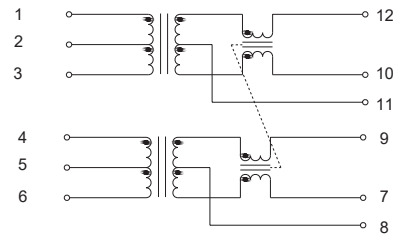
AH1201DR, AH1207DR, AH1216DR



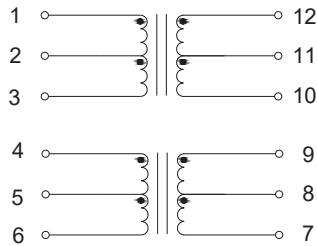
AH1202DR, AH1208DR



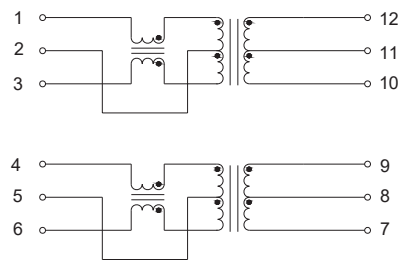
AH1203DR, AH1209DR



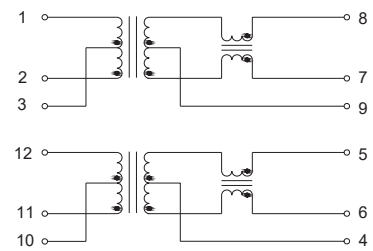
AH1204DR, FAH1210DR



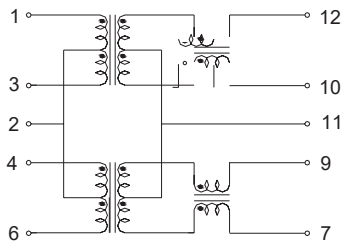
AH1205DR, AH1211DR



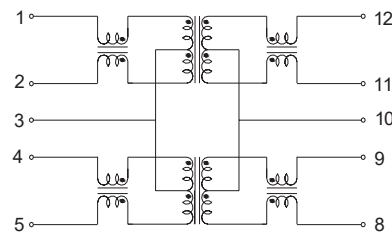
AH1206DR, AH1212DR



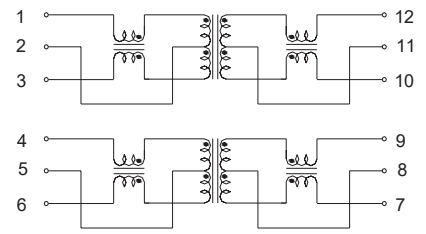
AH1213DR



AH1214DR



AH1215DR



Single port transformer modules 16Pin series

FEATURES

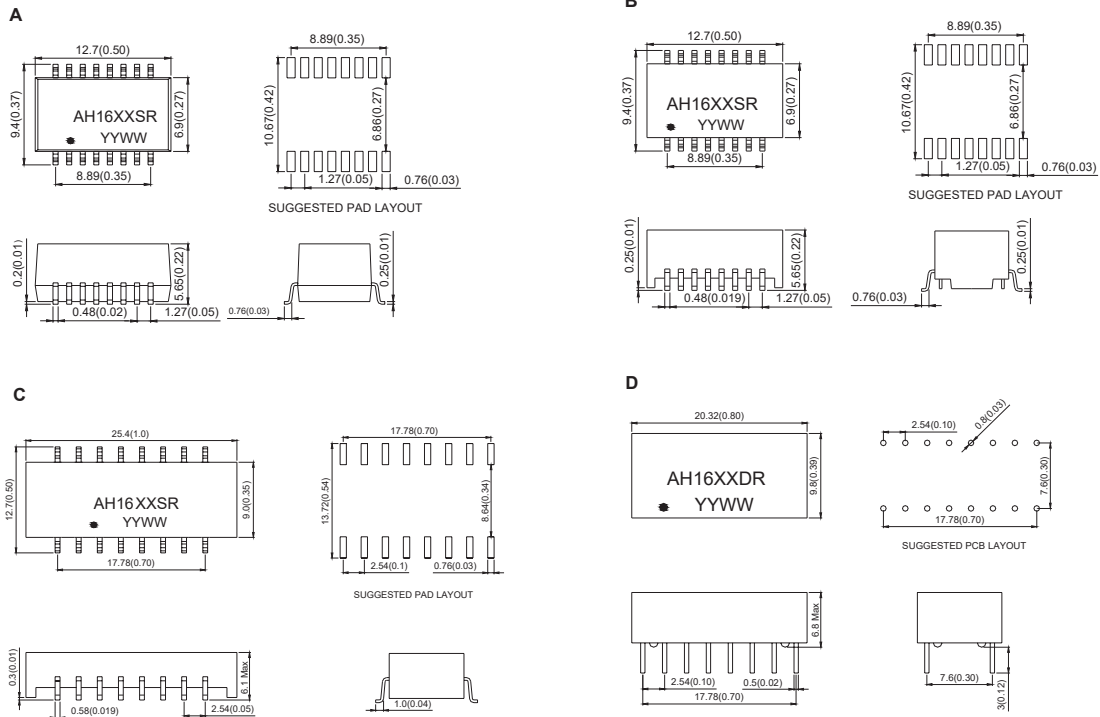
Compliant with IEEE 802.3 standard.
Primary inductance:350uH Min.@ 100KHz,0.1Vrms,8mA
RoHS compliant



Electrical Specification@25°C Operating Temperature 0 to 70°C

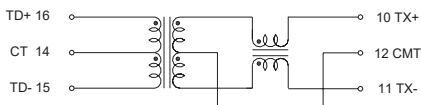
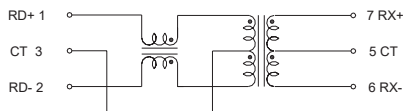
Part Number	Insertion Loss (dB Max) 1-100MHz	Return Loss (dB Typical) MHz				CMRR (dB Min) MHz		Cross talk (dB Min) MHz		Isolation Voltage (Vrms Min)	Package
		1-30	40	50	60-80	0.1-60	60-100	0.1-60	60-100		
AH1601SR	-1.0	-18	-14.4	-13.1	-12	-42	-40	-40	-38	1500	A
AH1602SR	-1.0	-18	-14.4	-13.1	-12	-42	-40	-40	-38	1500	A
AH1603SR	-1.0	-18	-14.4	-13.1	-12	-42	-40	-40	-38	1500	A
AH1604SR	-1.0	-18	-14.4	-13.1	-12	-42	-40	-40	-38	1500	B
AH1605SR	-1.0	-18	-14.4	-13.1	-12	-42	-40	-40	-38	1500	B
AH1606SR	-1.0	-18	-14.4	-13.1	-12	-42	-40	-40	-38	1500	B
AH1607SR	-1.0	-18	-14.4	-13.1	-12	-42	-40	-40	-38	1500	B
AH1608SR	-1.0	-18	-14.4	-13.1	-12	-42	-40	-40	-38	1500	B
AH1609SR	-1.0	-18	-14.4	-13.1	-12	-42	-40	-40	-38	1500	B
AH1610SR	-1.0	-18	-14.4	-13.1	-12	-42	-40	-40	-38	1500	B
AH1611SR	-1.0	-18	-14.4	-13.1	-12	-42	-40	-40	-38	1500	B
AH1612SR	-1.0	-18	-14.4	-13.1	-12	-42	-40	-40	-38	1500	C
AH1613SR	-1.0	-18	-14.4	-13.1	-12	-42	-40	-40	-38	1500	C
AH1614SR	-1.0	-18	-14.4	-13.1	-12	-42	-40	-40	-38	1500	C
AH1601DR	-1.0	-18	-14.4	-13.1	-12	-42	-40	-40	-38	1500	D
AH1602DR	-1.0	-18	-14.4	-13.1	-12	-42	-40	-40	-38	1500	D
AH1603DR	-1.0	-18	-14.4	-13.1	-12	-42	-40	-40	-38	1500	D
AH1604DR	-1.0	-18	-14.4	-13.1	-12	-42	-40	-40	-38	1500	D
AH1605DR	-1.0	-18	-14.4	-13.1	-12	-42	-40	-40	-38	1500	D
AH1606DR	-1.0	-18	-14.4	-13.1	-12	-42	-40	-40	-38	1500	D
AH1607DR	-1.0	-18	-14.4	-13.1	-12	-42	-40	-40	-38	1500	D
AH1608DR	-1.0	-18	-14.4	-13.1	-12	-42	-40	-40	-38	1500	D
AH1609DR	-1.0	-18	-14.4	-13.1	-12	-42	-40	-40	-38	1500	D
AH1610DR	-1.0	-18	-14.4	-13.1	-12	-42	-40	-40	-38	1500	D
AH1611DR	-1.0	-18	-14.4	-13.1	-12	-42	-40	-40	-38	1500	D
AH1612DR	-1.0	-18	-14.4	-13.1	-12	-42	-40	-40	-38	1500	D
AH1613DR	-1.0	-18	-14.4	-13.1	-12	-42	-40	-40	-38	1500	D
AH1614DR	-1.0	-18	-14.4	-13.1	-12	-42	-40	-40	-38	1500	D

Dimension : mm[inch] \pm 0.25[0.01]

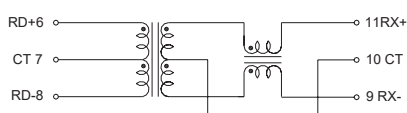
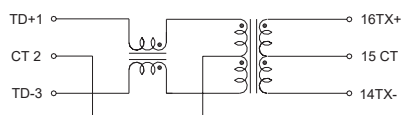


Schematic

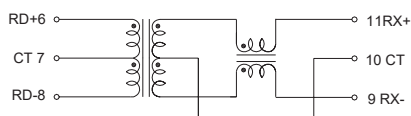
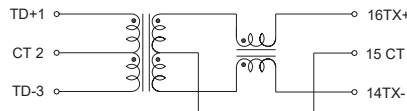
AH1607SR, AH1609SR, AH1613SR, AH1602DR



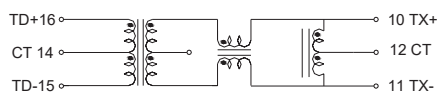
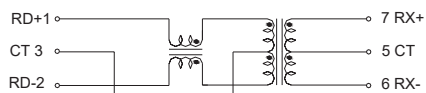
AH1604SR, AH1611SR, AH1606DR



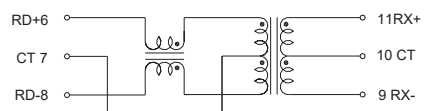
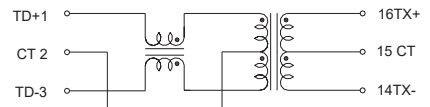
AH1601SR, AH1612SR, AH1601DR



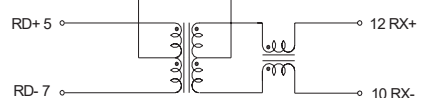
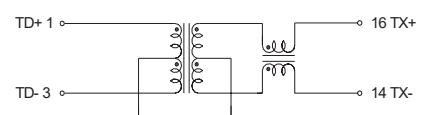
AH1605SR, AH1610SR, AH1614SR, AH1608DR



AH1602SR

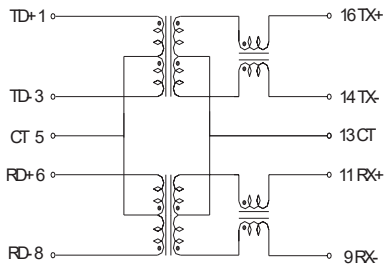


AH1606SR, AH1603DR

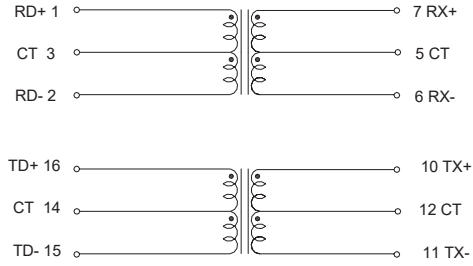


Schematic

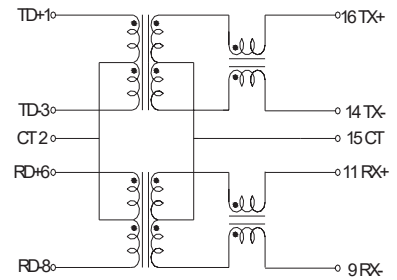
AH1603SR, AH16012DR



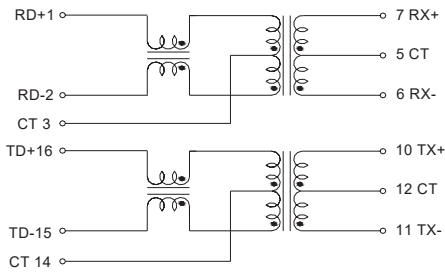
AH1604DR



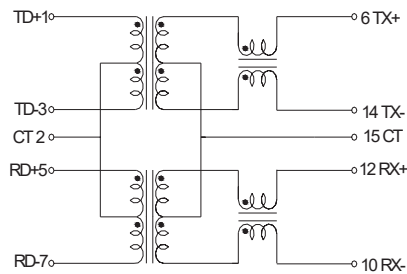
AH1605DR



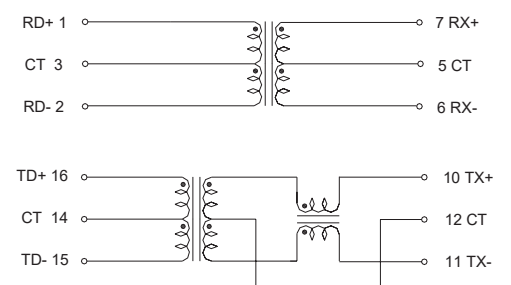
AH1607DR



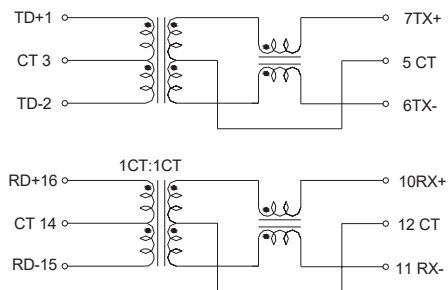
AH1608SR, AH1609DR



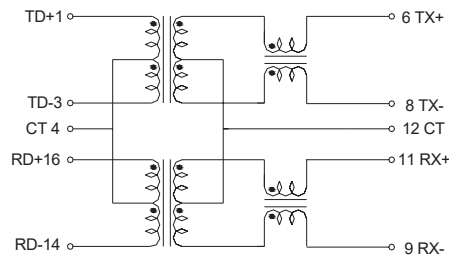
AH1610DR



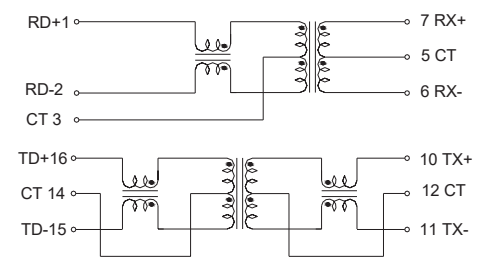
AH1611DR



AH1613DR



AH1614DR



Dual port transformer modules 20Pin series

FEATURES

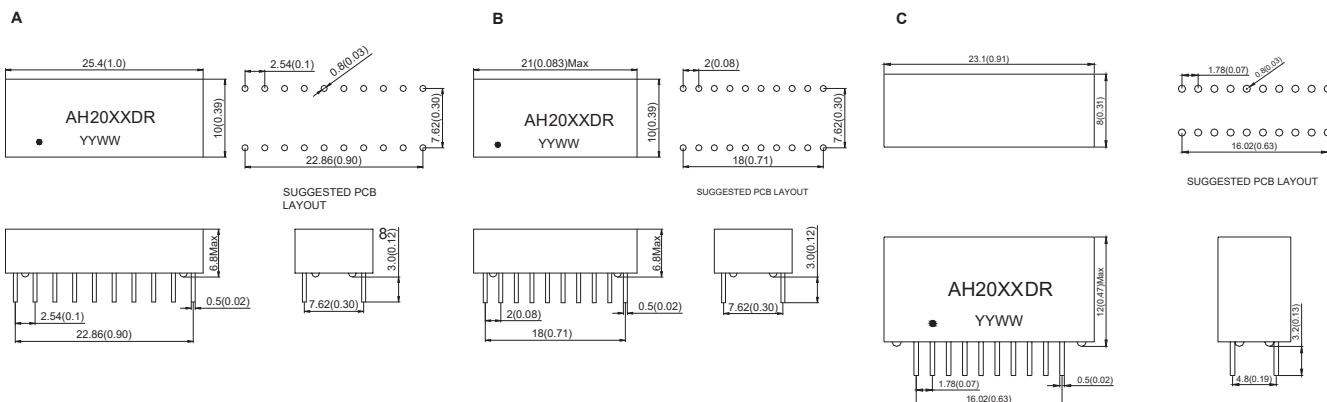
Compliant with IEEE 802.3 standard.
Designed for Auto MDI/MDIX Applications
Primary inductance:350uH Min.@ 100KHz,0.1Vrms,8mA
RoHS compliant



Electrical Specification@25°C Operating Temperature 0 to 70°C

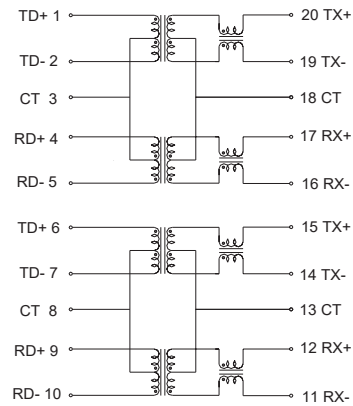
Part Number	Insertion Loss (dB Max) 1-100MHz	Return Loss (dB Typical) MHz				CMRR (dB Min) MHz		Cross talk (dB Min) MHz		Isolation Voltage (Vrms Min)	Package
		1-30	40	50	60-80	0.1-60	60-100	0.1-60	60-100		
AH2001DR	-1.0	-18	-14.4	-13.1	-12	-42	-40	-40	-38	1500	A
AH2002DR	-1.0	-18	-14.4	-13.1	-12	-42	-40	-40	-38	1500	B
AH2003DR	-1.0	-18	-14.4	-13.1	-12	-42	-40	-40	-38	1500	A
AH2004DR	-1.0	-18	-14.4	-13.1	-12	-42	-40	-40	-38	1500	A
AH2005DR	-1.0	-18	-14.4	-13.1	-12	-42	-40	-40	-38	1500	A
AH2006DR	-1.0	-18	-14.4	-13.1	-12	-42	-40	-40	-38	1500	B
AH2007DR	-1.0	-18	-14.4	-13.1	-12	-42	-40	-40	-38	1500	B
AH2008DR	-1.0	-18	-14.4	-13.1	-12	-42	-40	-40	-38	1500	B
AH2009DR	-1.0	-18	-14.4	-13.1	-12	-42	-40	-40	-38	1500	A
AH2010DR	-1.0	-18	-14.4	-13.1	-12	-42	-40	-40	-38	1500	A
AH2011DR	-1.0	-18	-14.4	-13.1	-12	-42	-40	-40	-38	1500	A
AH2012DR	-1.0	-18	-14.4	-13.1	-12	-42	-40	-40	-38	1500	A
AH2013DR	-1.0	-18	-14.4	-13.1	-12	-42	-40	-40	-38	1500	A
AH2014DR	-1.0	-18	-14.4	-13.1	-12	-42	-40	-40	-38	1500	C
AH2015DR	-1.0	-18	-14.4	-13.1	-12	-42	-40	-40	-38	1500	C
AH2016DR	-1.0	-18	-14.4	-13.1	-12	-42	-40	-40	-38	1500	B
AH2017DR	-1.0	-18	-14.4	-13.1	-12	-42	-40	-40	-38	1500	B

Dimension : mm[inch]+/-0.25[0.01]

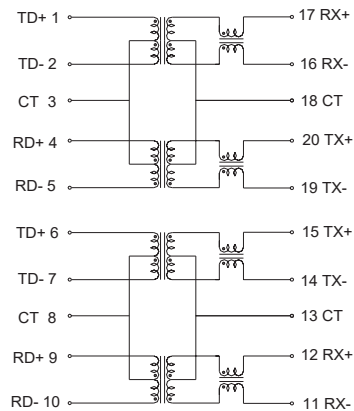


Schematic

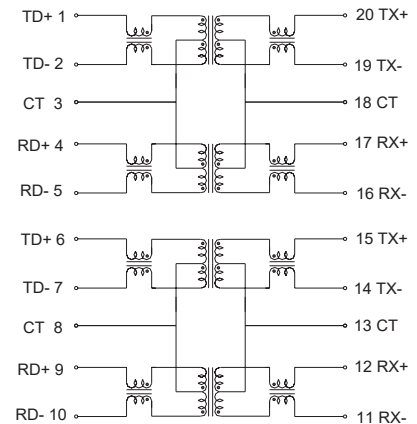
AH2001DR, AH2002DR



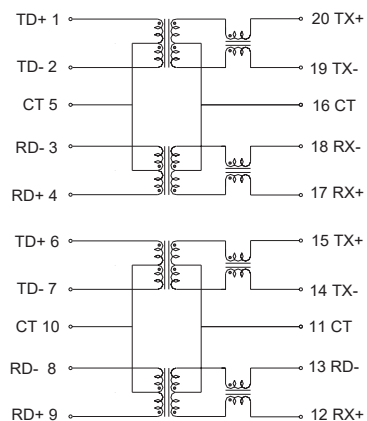
AH2005DR, AH2006DR



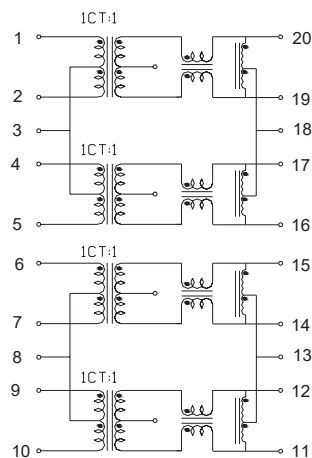
AH2003DR, AH2007DR



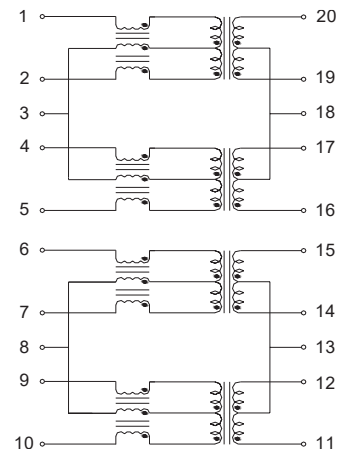
AH2004DR, AH2008DR, FAH2014DR



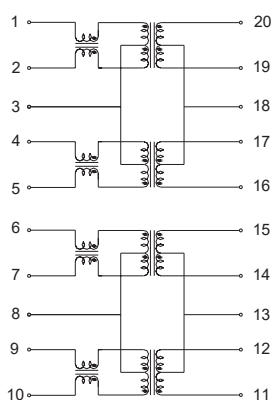
AH2010DR



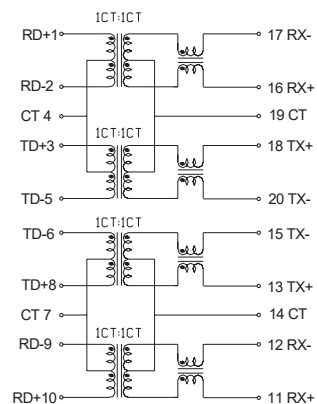
AH2011DR



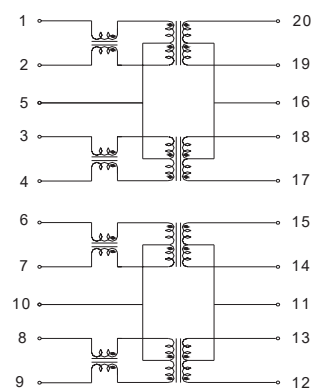
AH2012DR, AH2016DR



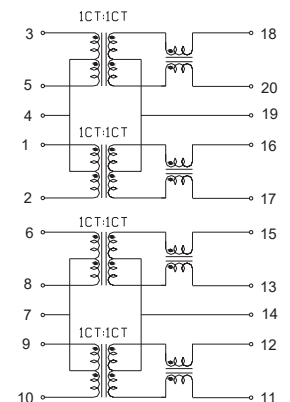
AH2013DR



AH2015DR



AH2009DR, AH2017DR



Quad port transformer modules 40Pin series

FEATURES

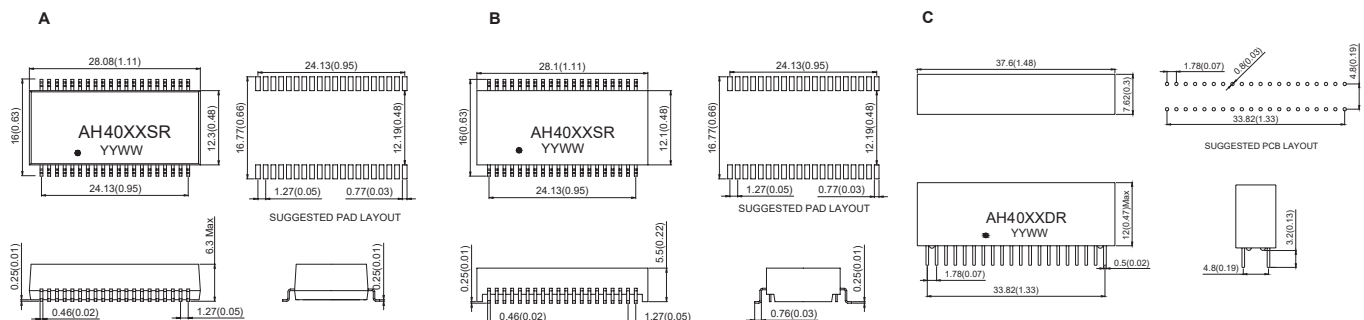
Compliant with IEEE 802.3 standard.
Designed for multiport repeater & Ethernet Switching Hub application
Primary inductance:350uH Min.@ 100KHz,0.1Vrms,8mA
RoHS compliant



Electrical Specification@25°C Operating Temperature 0 to 70°C

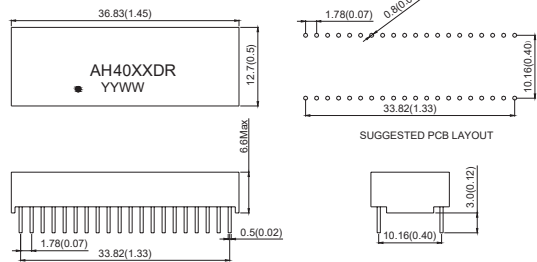
Part Number	Insertion Loss (dB Max) 1-100MHz	Return Loss (dB Typical) MHz				CMRR (dB Min) MHz		Cross talk (dB Min) MHz		Isolation Voltage (Vrms Min)	Package
		1-30	40	50	60-80	0.1-60	60-100	0.1-60	60-100		
AH4001SR	-1.0	-18	-14.4	-13.1	-12	-42	-40	-40	-38	1500	B
AH4002SR	-1.0	-18	-14.4	-13.1	-12	-42	-40	-40	-38	1500	B
AH4003SR	-1.0	-18	-14.4	-13.1	-12	-42	-40	-40	-38	1500	A
AH4004SR	-1.0	-18	-14.4	-13.1	-12	-42	-40	-40	-38	1500	A
AH4005SR	-1.0	-18	-14.4	-13.1	-12	-42	-40	-40	-38	1500	B
AH4006SR	-1.0	-18	-14.4	-13.1	-12	-42	-40	-40	-38	1500	B
AH4007SR	-1.0	-18	-14.4	-13.1	-12	-42	-40	-40	-38	1500	B
AH4001DR	-1.0	-18	-14.4	-13.1	-12	-42	-40	-40	-38	1500	C
AH4002DR	-1.0	-18	-14.4	-13.1	-12	-42	-40	-40	-38	1500	C
AH4003DR	-1.0	-18	-14.4	-13.1	-12	-42	-40	-40	-38	1500	C
AH4004DR	-1.0	-18	-14.4	-13.1	-12	-42	-40	-40	-38	1500	C
AH4005DR	-1.0	-18	-14.4	-13.1	-12	-42	-40	-40	-38	1500	C
AH4006DR	-1.0	-18	-14.4	-13.1	-12	-42	-40	-40	-38	1500	D
AH4007DR	-1.0	-18	-14.4	-13.1	-12	-42	-40	-40	-38	1500	D
AH4008DR	-1.0	-18	-14.4	-13.1	-12	-42	-40	-40	-38	1500	D
AH4009DR	-1.0	-18	-14.4	-13.1	-12	-42	-40	-40	-38	1500	D
AH4010DR	-1.0	-18	-14.4	-13.1	-12	-42	-40	-40	-38	1500	C
AH4011DR	-1.0	-18	-14.4	-13.1	-12	-42	-40	-40	-38	1500	E
AH4012DR	-1.0	-18	-14.4	-13.1	-12	-42	-40	-40	-38	1500	C

Dimension : mm[inch]+/-0.25[0.01]

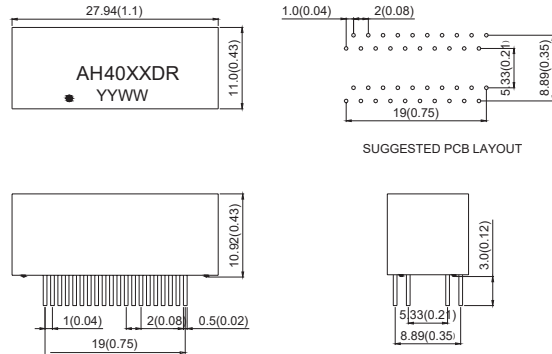


Dimension : mm[inch] +/-0.25[0.01]

D

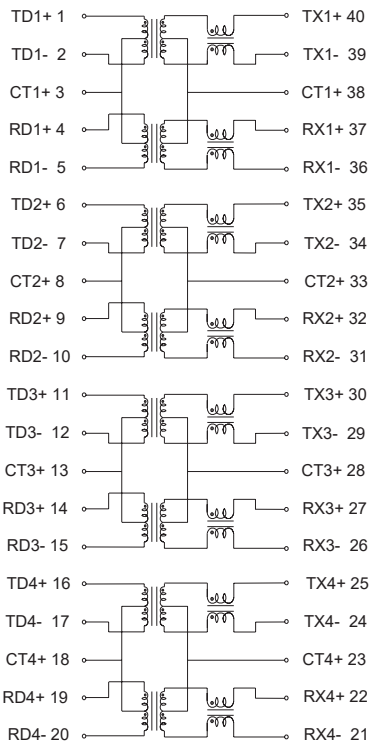


E

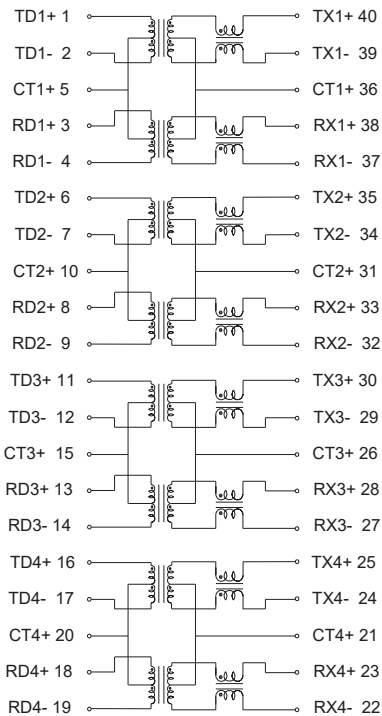


Schematic

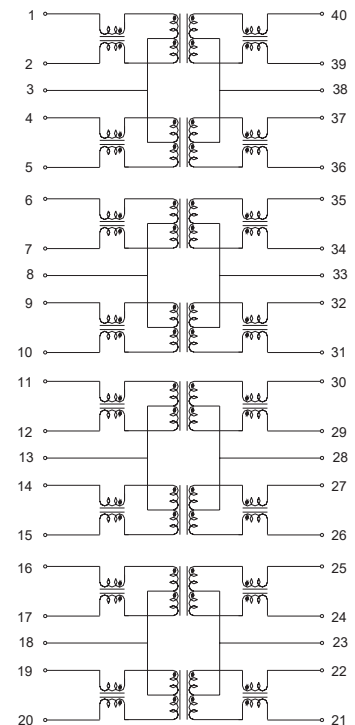
AH4001SR, AH4003SR, AH4002DR, AH4007DR, AH4011DR



AH4005SR, AH4001DR

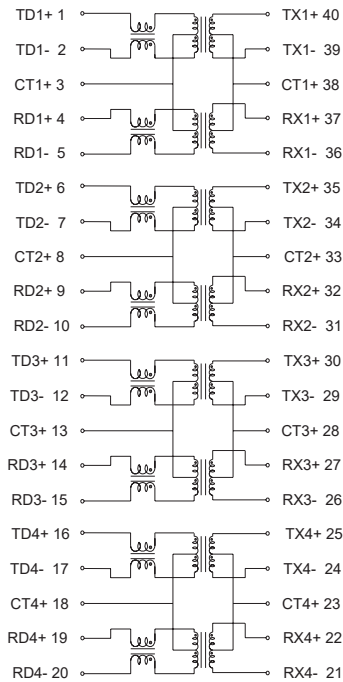


AH4006DR

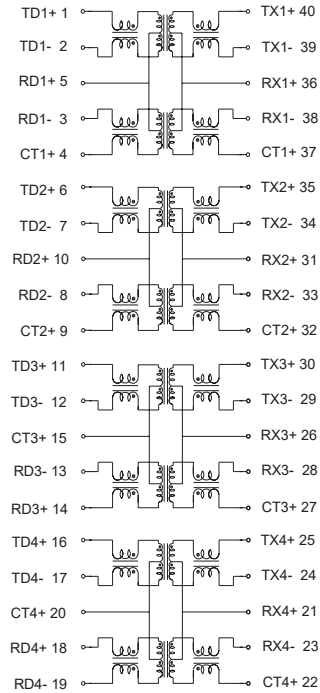


Schematic

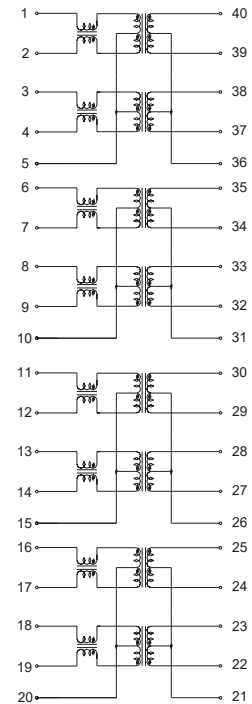
AH4002SR, AH4004SR, AH4006DR, AH4008DR



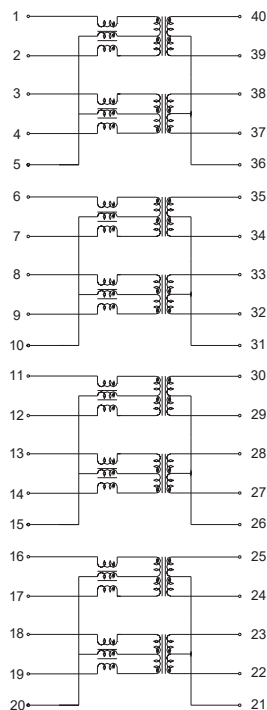
AH4006SR, AH4004DR, AH4009DR



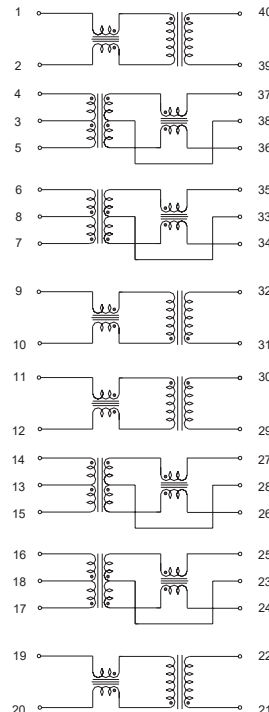
AH4010DR



AH4012DR



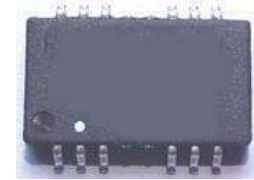
AH4007SR, AH4005DR



Transformer Module 16Pin series

FEATURES

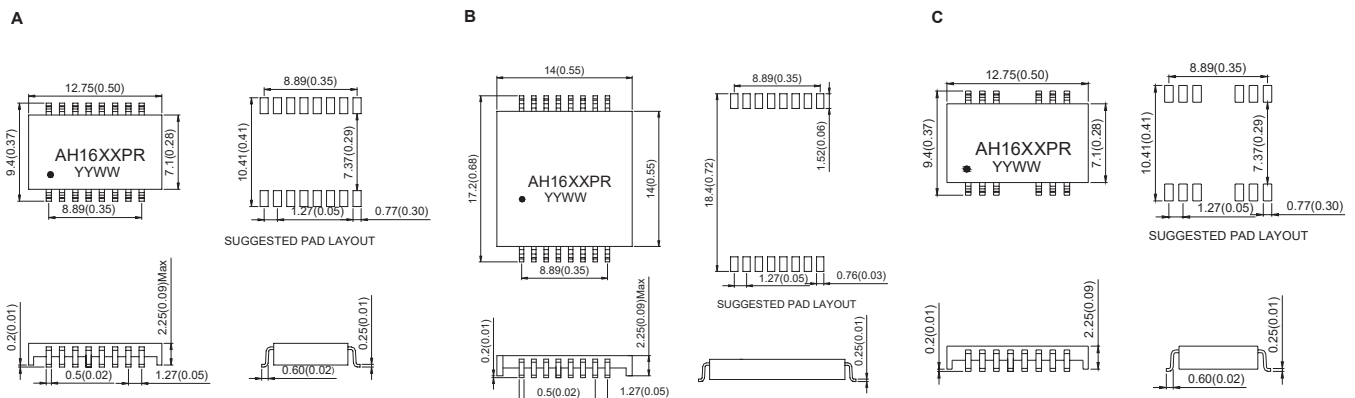
Compliant with IEEE 802.3 standard.
Small Package
RoHS compliant



Electrical Specification@25°C Operating Temperature 0 to 70°C

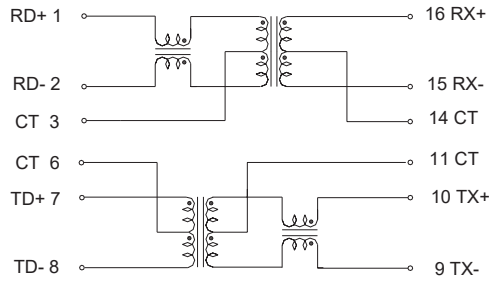
Part Number	Insertion Loss (dB Max) 1-100MHz	Return Loss (dB Typical) MHz				CMRR (dB Min) MHz		Cross talk (dB Min) MHz		Isolation Voltage (Vrms Min)	Primary Inductance (uH Min) 100KHZ,0.1V	Package
		1-30	40	50	60-80	0.1-60	60-100	0.1-60	60-100			
AH1601PR	-1.0	-18	-14.4	-13.1	-12	-42	-40	-40	-38	1500	350	C
AH1602PR	-1.0	-18	-14.4	-13.1	-12	-42	-40	-40	-38	1500	350	C
AH1603PR	-1.0	-18	-14.4	-13.1	-12	-42	-40	-40	-38	1500	350	B
AH1604PR	-1.0	-18	-14.4	-13.1	-12	-42	-40	-40	-38	1500	350	B
AH1605PR	-1.0	-18	-14.4	-13.1	-12	-42	-40	-40	-38	1500	350	A
AH1606PR	-1.0	-18	-14.4	-13.1	-12	-42	-40	-40	-38	1500	350	A
AH1607PR	-1.0	-18	-14.4	-13.1	-12	-42	-40	-40	-38	1500	350 8mA DC Bias	A
AH1608PR	-1.0	-18	-14.4	-13.1	-12	-42	-40	-40	-38	1500	350 8mA DC Bias	B

Dimension : mm [inch] +/- 0.25 [0.01]

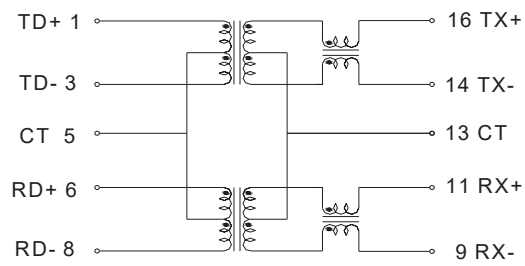


Schematic

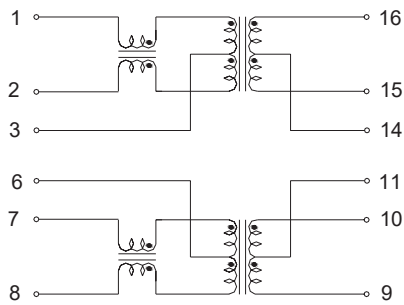
AH1601PR, AH1603PR, AH1607PR, AH1608PR



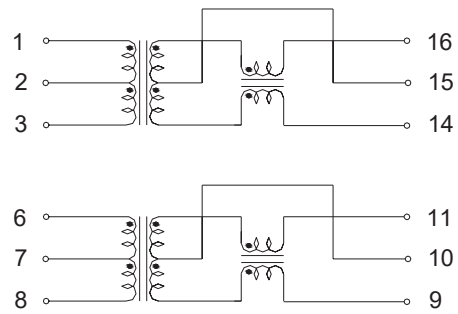
AH1604PR, AH1605PR



AH1606PR



AH1602PR



Transformer Module 24Pin series

FEATURES

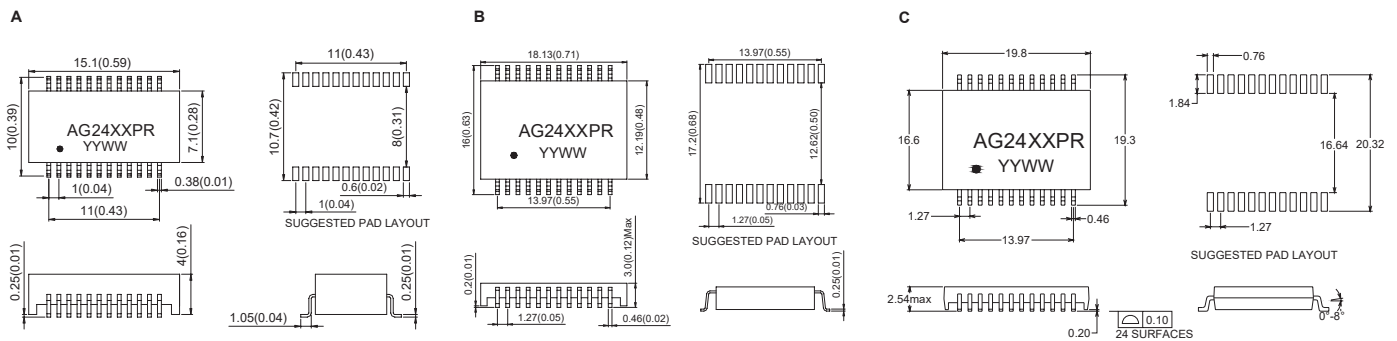
Compliant with IEEE 802.3 standard.
RoHS compliant



Electrical Specification@25°C Operating Temperature 0 to 70°C

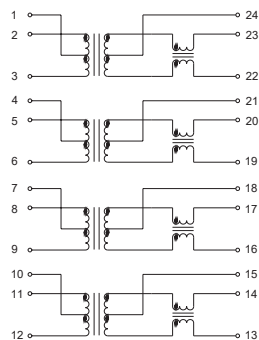
Part Number	Insertion Loss (dB Max) 1-100MHz	Return Loss (dB Typical) MHz				CMRR (dB Min) MHz		Cross talk (dB Min) MHz		Isolation Voltage (Vrms Min)	Primary Inductance (uH Min) 100KHZ,0.1V	Package
		1-30	40	50	60-80	0.1-60	60-100	0.1-60	60-100			
AG2401PR	-1.0	-18	-14.4	-13.1	-12	-42	-40	-40	-38	1500	350	A
AG2402PR	-1.0	-18	-14.4	-13.1	-12	-42	-40	-40	-38	1500	350	B
AG2403PR	-1.0	-18	-14.4	-13.1	-12	-42	-40	-40	-38	1500	350	C
AG2404PR	-1.0	-18	-14.4	-13.1	-12	-42	-40	-40	-38	1500	350	C
AG2405PR	-1.0	-18	-14.4	-13.1	-12	-42	-40	-40	-38	1500	350 8mA DC Bias	B

Dimension : mm[inch]+/-0.25[0.01]

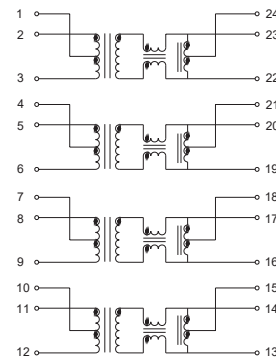


Schematic

AG2401PR, AG2403PR, AG2405PR



AG2402PR, AG2404PR



Single port transformer modules 18Pin series

FEATURES

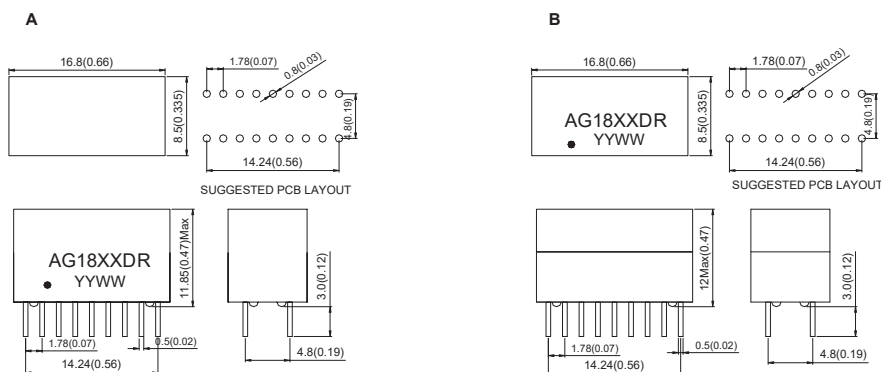
Compliant with IEEE 802.3 standard.
Primary inductance: 350uH Min. @ 100KHz, 0.1Vrms, 8mA .
RoHS compliant



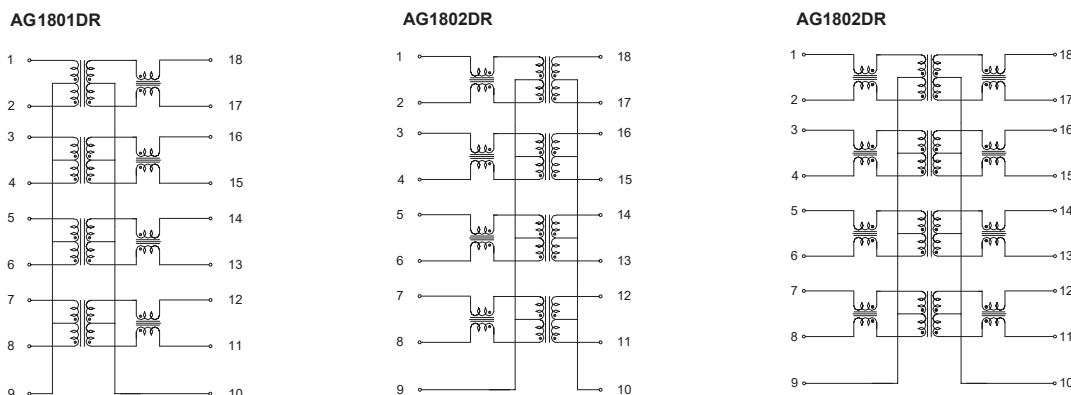
Electrical Specification @ 25°C Operating Temperature 0 to 70°C

Part Number	Insertion Loss (dB Max) 1-125MHz	Return Loss (dB Typical) MHz				CMRR (dB Min) MHz		Cross talk (dB Min) MHz		Isolation Voltage (Vrms Min)	Package
		1-30	40	50	60-80	0.1-60	60-100	0.1-60	60-100		
AG1801DR	-1.0	-18	-14.4	-13.1	-12	-42	-40	-40	-38	1500	B
AG1802DR	-1.0	-18	-14.4	-13.1	-12	-42	-40	-40	-38	1500	A
AG1803DR	-1.0	-18	-14.4	-13.1	-12	-42	-40	-40	-38	1500	B

Dimension : mm[inch] +/- 0.25[0.01]



Schematic



Single port transformer modules 24Pin series

FEATURES

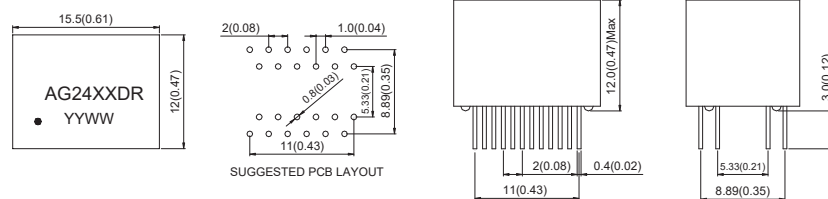
Compliant with IEEE 802.3 standard.
Primary inductance(Lp)350uH Min.@ 100KHz,0.1Vrms,8mA
RoHS compliant



Electrical Specification@25°C Operating Temperature 0 to 70°C

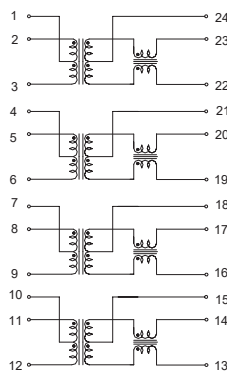
Part Number	Insertion Loss (dB Max) 1-125MHz	Return Loss (dB Typical) MHz				CMRR (dB Min) MHz		Cross talk (dB Min) MHz		Isolation Voltage (Vrms Min)	Package
		1-30	40	50	60-80	0.1-60	60-100	0.1-60	60-100		
AG2401DR	-1.0	-18	-14.4	-13.1	-12	-42	-40	-40	-38	1500	A
AG2402DR	-1.0	-18	-14.4	-13.1	-12	-42	-40	-40	-38	1500	A
AG2403DR	-1.0	-18	-14.4	-13.1	-12	-42	-40	-40	-38	1500	A

Dimension : mm[inch]+/-0.25[0.01]

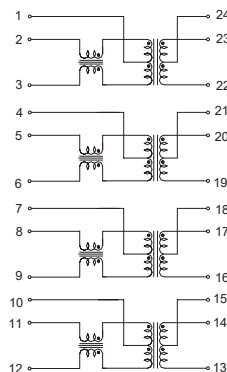


Schematic

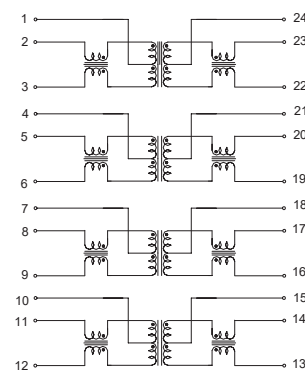
AG2401DR



AG2402DR



AG2403DR



Single port transformer modules 24Pin series

FEATURES

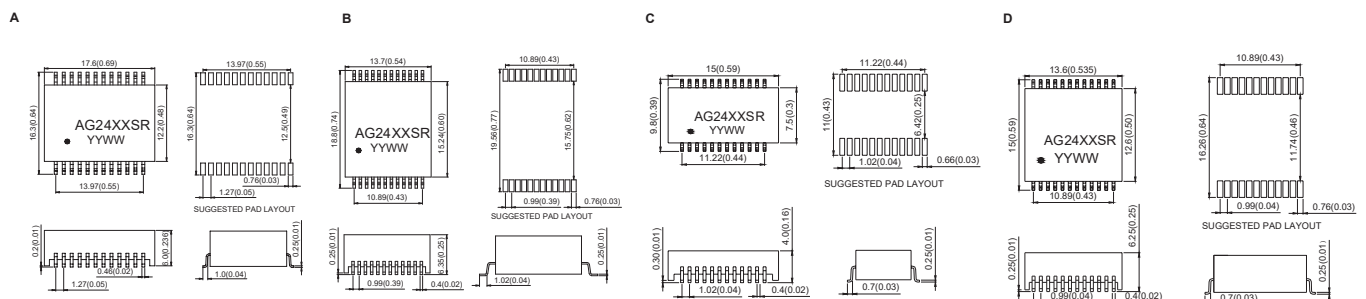
Cable interface for isolation and low common mode emissions
Compliant with IEEE 802.3 standard for 1000Base-T
RoHS compliant



Electrical Specification@25°C Operating Temperature 0 to 70°C

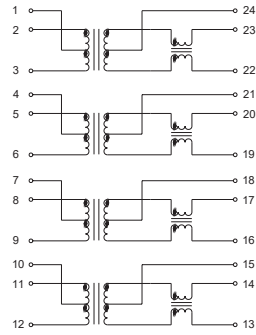
Part Number	Insertion Loss (dB Max) 1-125MHz	Return Loss (dB Typical) MHz				CMRR (dB Min) MHz		Cross talk (dB Min) MHz		Isolation Voltage (Vrms Min)	Package
		1-30	40	50	60-80	0.1-60	60-100	0.1-60	60-100		
AG2401SR	-1.0	-18	-14.4	-13.1	-12	-42	-40	-40	-38	1500	A
AG2402SR	-1.0	-18	-14.4	-13.1	-12	-42	-40	-40	-38	1500	A
AG2403SR	-1.0	-18	-14.4	-13.1	-12	-42	-40	-40	-38	1500	B
AG2404SR	-1.0	-18	-14.4	-13.1	-12	-42	-40	-40	-38	1500	B
AG2405SR	-1.0	-18	-14.4	-13.1	-12	-42	-40	-40	-38	1500	B
AG2406SR	-1.0	-18	-14.4	-13.1	-12	-42	-40	-40	-38	1500	C
AG2407SR	-1.0	-18	-14.4	-13.1	-12	-42	-40	-40	-38	1500	B
AG2408SR	-1.0	-18	-14.4	-13.1	-12	-42	-40	-40	-38	1500	C
AG2409SR	-1.0	-18	-14.4	-13.1	-12	-42	-40	-40	-38	1500	D
AG2410SR	-1.0	-18	-14.4	-13.1	-12	-42	-40	-40	-38	1500	D
AG2411SR	-1.0	-18	-14.4	-13.1	-12	-42	-40	-40	-38	1500	A
AG2412SR	-1.0	-18	-14.4	-13.1	-12	-42	-40	-40	-38	1500	B
AG2413SR	-1.0	-18	-14.4	-13.1	-12	-42	-40	-40	-38	1500	D
AG2414SR	-1.0	-18	-14.4	-13.1	-12	-42	-40	-40	-38	1500	A
AG2415SR	-1.0	-18	-14.4	-13.1	-12	-42	-40	-40	-38	1500	A

Dimension : mm[inch] +/-0.25[0.01]

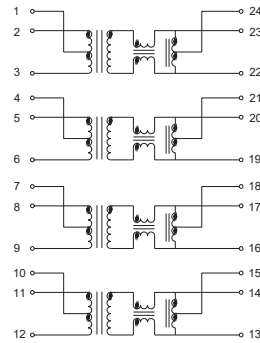


Schematic

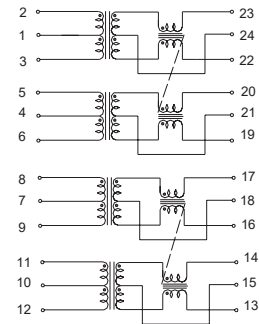
AG2401SR, AG2404SR, AG2406SR,
AG2409SR, AG2414SR



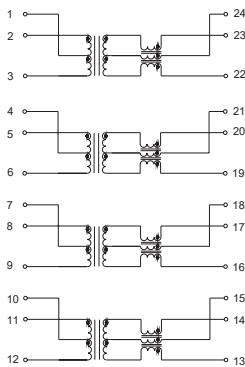
AG2402SR, AG2403SR



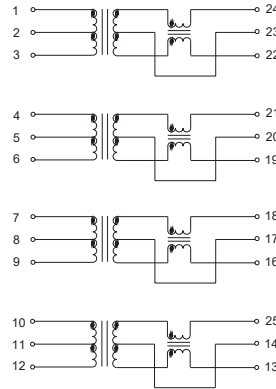
AG2410SR



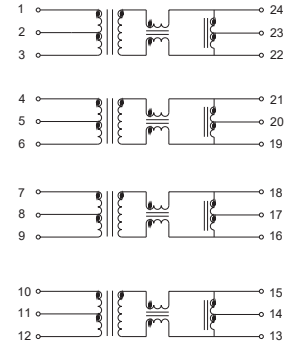
AG2405SR



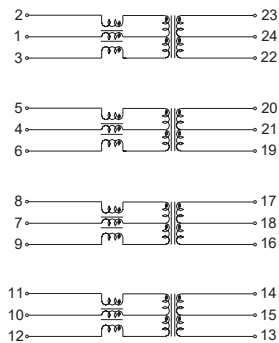
AG2407SR



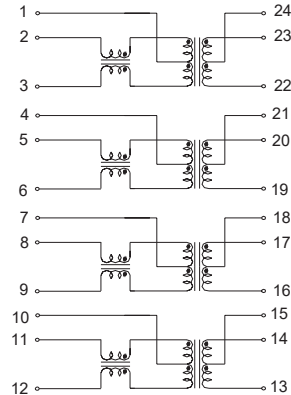
AG2408SR, AG2412SR



AG2415SR, AG2413SR



AG2411SR



Dual port transformer modules 48Pin series

FEATURES

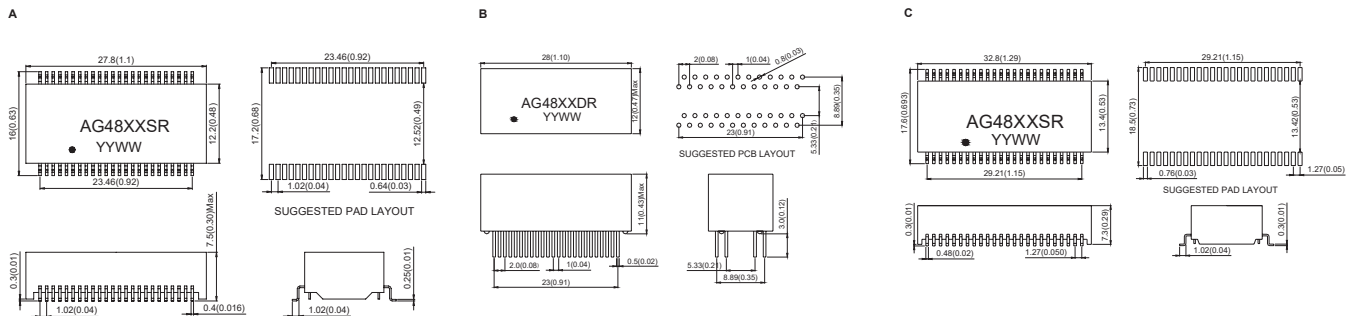
Cable interface for isolation and low common mode emissions
Compliant with IEEE 802.3 standard for 1000Base-T
RoHS compliant



Electrical Specification@25°C Operating Temperature 0 to 70°C

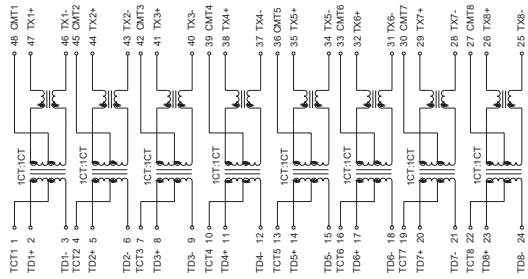
Part Number	Insertion Loss (dB Max) 1-125MHz	Return Loss (dB Typical) MHz				CMRR (dB Min) MHz		Cross talk (dB Min) MHz		Isolation Voltage (Vrms Min)	Package
		1-30	40	50	60-80	0.1-60	60-100	0.1-60	60-100		
AG4801SR	-1.0	-18	-14.4	-13.1	-12	-42	-40	-40	-38	1500	A
AG4802SR	-1.0	-18	-14.4	-13.1	-12	-42	-40	-40	-38	1500	A
AG4803SR	-1.0	-18	-14.4	-13.1	-12	-42	-40	-40	-38	1500	A
AG4804SR	-1.0	-18	-14.4	-13.1	-12	-42	-40	-40	-38	1500	A
AG4805SR	-1.0	-18	-14.4	-13.1	-12	-42	-40	-40	-38	1500	A
AG4806SR	-1.0	-18	-14.4	-13.1	-12	-42	-40	-40	-38	1500	A
AG4807SR	-1.0	-18	-14.4	-13.1	-12	-42	-40	-40	-38	1500	C
AG4808SR	-1.0	-18	-14.4	-13.1	-12	-42	-40	-40	-38	1500	A
AG4809SR	-1.0	-18	-14.4	-13.1	-12	-42	-40	-40	-38	1500	A
AG4810SR	-1.0	-18	-14.4	-13.1	-12	-42	-40	-40	-38	1500	A
AG4801DR	-1.0	-18	-14.4	-13.1	-12	-42	-40	-40	-38	1500	B
AG4802DR	-1.0	-18	-14.4	-13.1	-12	-42	-40	-40	-38	1500	B
AG4803DR	-1.0	-18	-14.4	-13.1	-12	-42	-40	-40	-38	1500	B
AG4804DR	-1.0	-18	-14.4	-13.1	-12	-42	-40	-40	-38	1500	B

Dimension : mm[inch] +/-0.25[0.01]

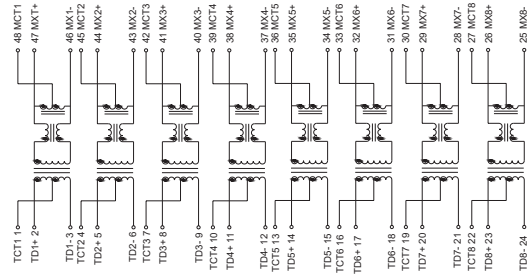


Schematic

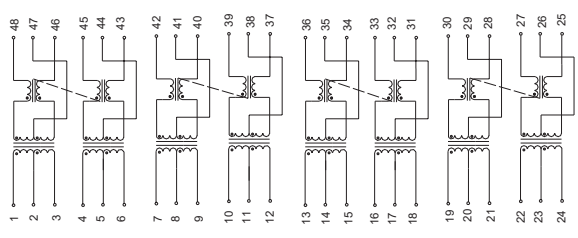
AG4801SR, AG4801DR



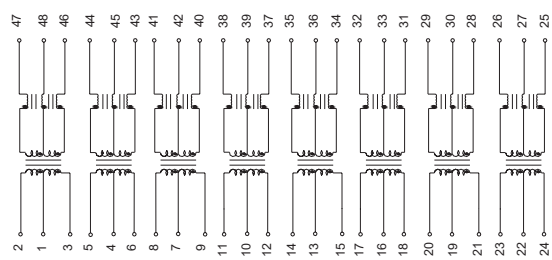
AG4802SR



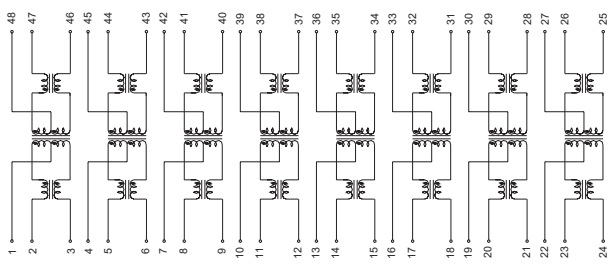
AG4803SR, AG4802DR



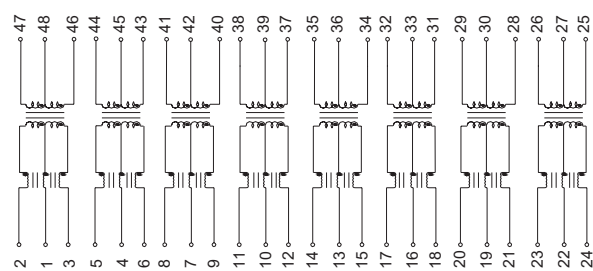
AG4804SR



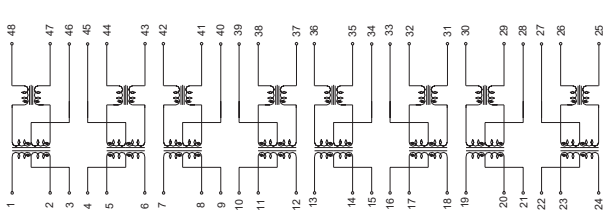
AG4810SR, AG4804DR



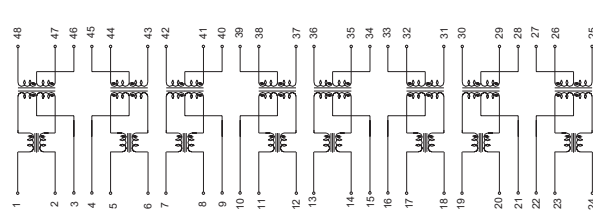
AG4806SR



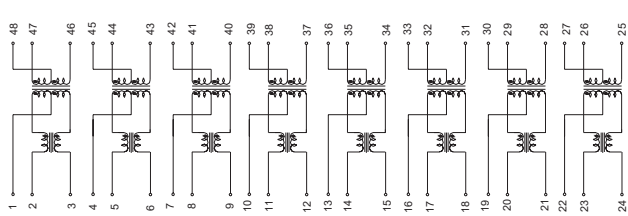
AG4807SR, AG4808SR



AG4809SR



AG4805SR, AG4803DR



Quad port transformer modules 72Pin series

FEATURES

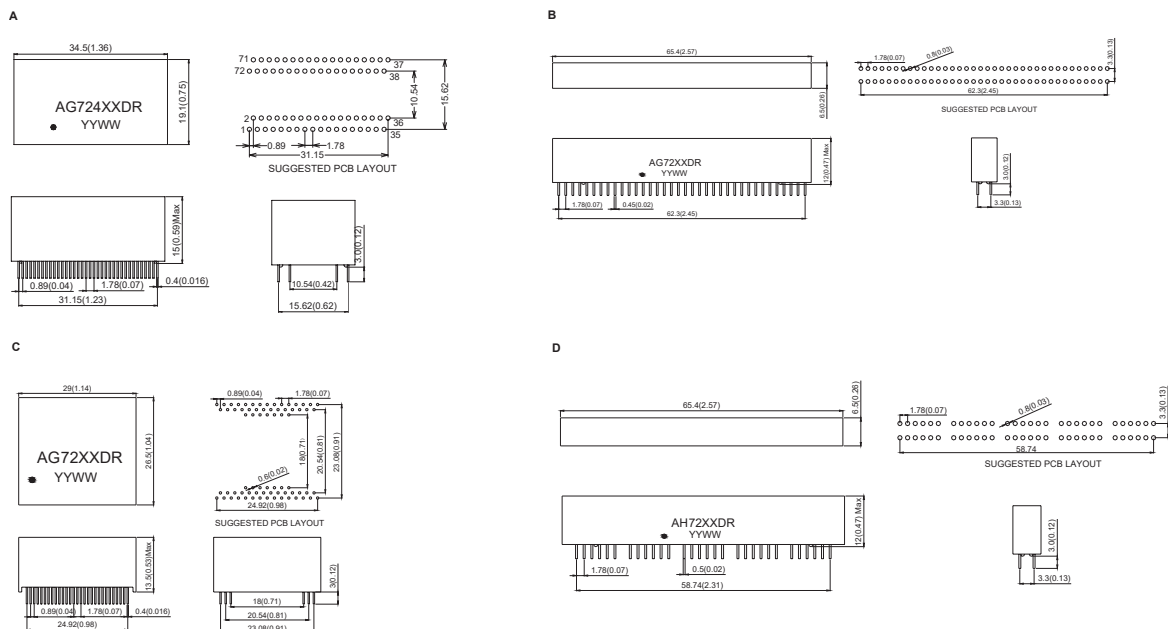
Cable interface for isolation and low common mode emissions
Compliant with IEEE 802.3 standard for 1000Base-T
RoHS compliant



Electrical Specification@25°C Operating Temperature 0 to 70°C

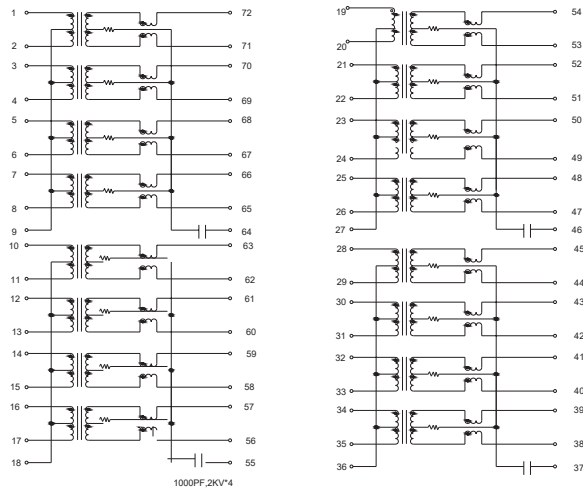
Part Number	Insertion Loss (dB Max) 1-125MHz	Return Loss (dB Typical) MHz				CMRR (dB Min) MHz		Cross talk (dB Min) MHz		Isolation Voltage (Vrms Min)	Package
		1-30	40	50	60-80	0.1-60	60-100	0.1-60	60-100		
AG7201DR	-1.0	-18	-14.4	-13.1	-12	-42	-40	-40	-38	1500	A
AG7202DR	-1.0	-18	-14.4	-13.1	-12	-42	-40	-40	-38	1500	B
AG7203DR	-1.0	-18	-14.4	-13.1	-12	-42	-40	-40	-38	1500	C
AG7204DR	-1.0	-18	-14.4	-13.1	-12	-42	-40	-40	-38	1500	C
AG7205DR	-1.0	-18	-14.4	-13.1	-12	-42	-40	-40	-38	1500	A
AG7206DR	-1.0	-18	-14.4	-13.1	-12	-42	-40	-40	-38	1500	C
AG7207DR	-1.0	-18	-14.4	-13.1	-12	-42	-40	-40	-38	1500	A
AG7208DR	-1.0	-18	-14.4	-13.1	-12	-42	-40	-40	-38	1500	B
AG7209DR	-1.0	-18	-14.4	-13.1	-12	-42	-40	-40	-38	1500	A
AG7210DR	-1.0	-18	-14.4	-13.1	-12	-42	-40	-40	-38	1500	C
AG7211DR	-1.0	-18	-14.4	-13.1	-12	-42	-40	-40	-38	1500	C
AH7201DR	-1.0	-18	-14.4	-13.1	-12	-42	-40	-40	-38	1500	D

Dimension : mm[inch]+/-0.25[0.01]

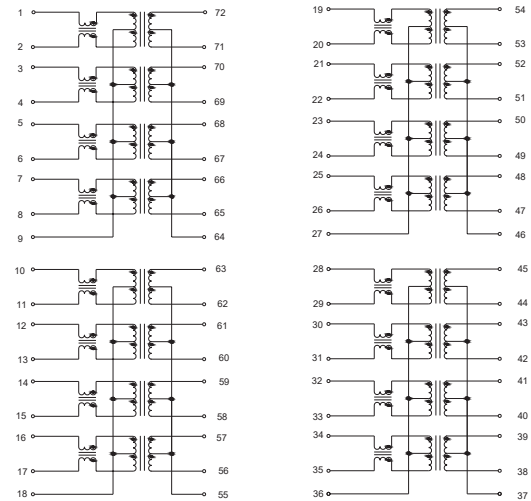


Schematic

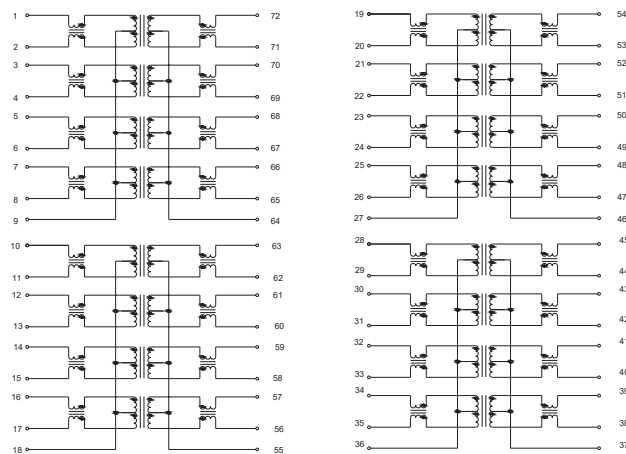
AG7201DR, AG7203DR



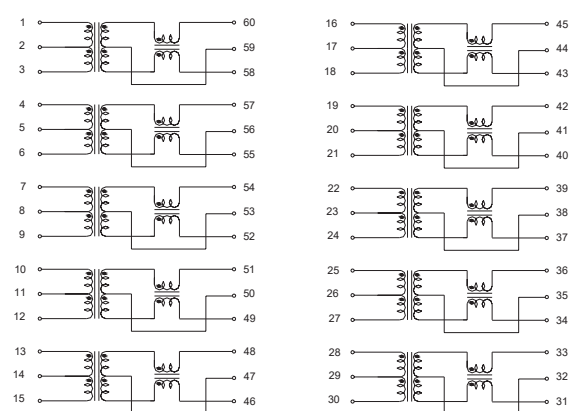
AG7204DR, AG7207DR



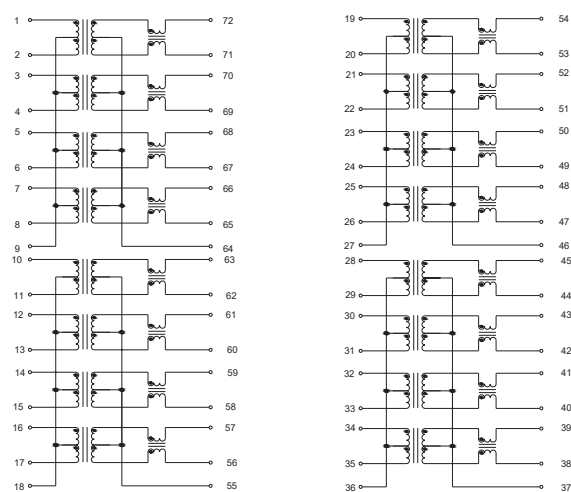
AG7205DR, AG7206DR



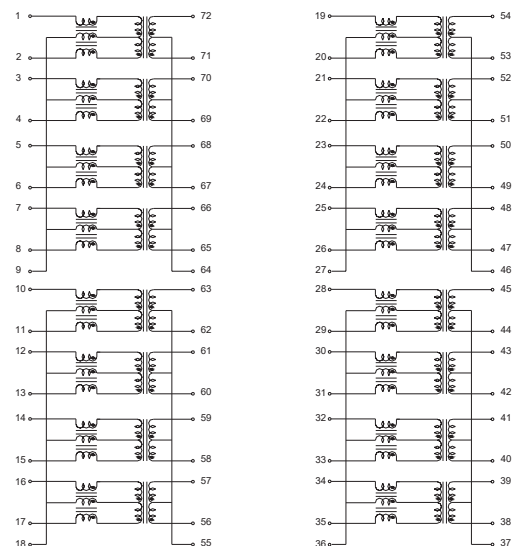
AH7201DR



AG7202DR, AG7209DR, AG7211DR



AG7210DR



Quad port transformer modules 88Pin series

FEATURES

Cable interface for isolation and low common mode emissions
Compliant with IEEE 802.3 standard for 1000Base-T
RoHS compliant



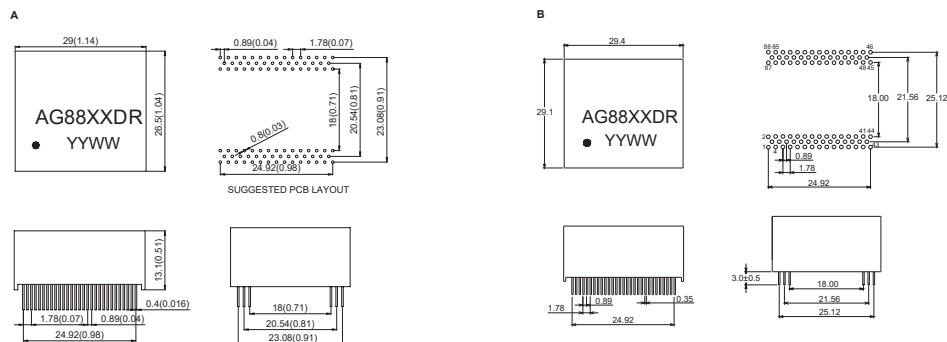
Electrical Specification@25°C Operating Temperature 0 to 70°C

Part Number	Insertion Loss (dB Max) 1-125MHz	Return Loss (dB Typical) MHz				CMRR (dB Min) MHz		Cross talk (dB Min) MHz		Isolation Voltage (Vrms Min)	Package
		1-30	40	50	60-80	0.1-60	60-100	0.1-60	60-100		
AG8801DR	-1.0	-18	-14.4	-13.1	-12	-42	-40	-40	-38	1500	A
AG8802DR*	-1.0	-18	-14.4	-13.1	-12	-42	-40	-40	-38	1500	B
AG8803DR	-1.0	-18	-14.4	-13.1	-12	-42	-40	-40	-38	1500	A
AG8804DR*	-1.0	-18	-14.4	-13.1	-12	-42	-40	-40	-38	1500	A

REMARK

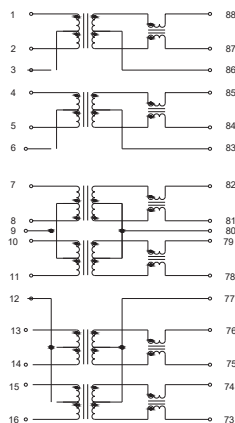
*:Compliant with IEEE 802.3af standard for 1000Base-T
*:Primary Inductance 350 uH MIN with 21 mA DC BIAS

Dimension : mm[inch]+/-0.25[0.01]

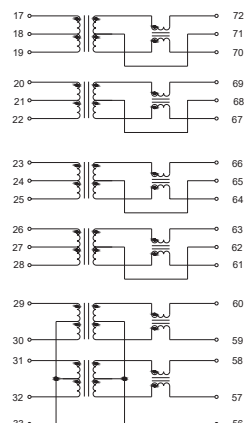


Schematic

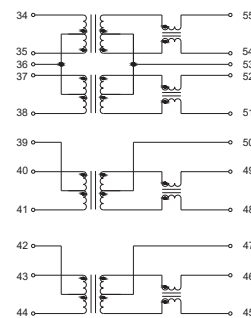
AG88T01, AG88T02,



AG88T01P



AG88T03P



Quad port transformer modules 90Pin series

FEATURES

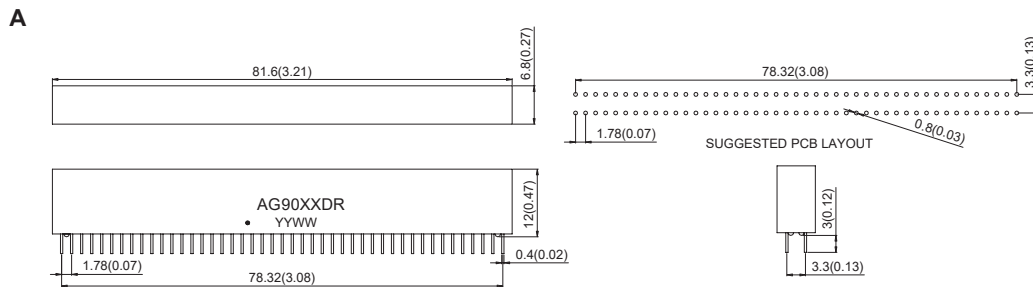
Cable interface for isolation and low common mode emissions
Compliant with IEEE 802.3 standard for 1000Base-T
RoHS compliant



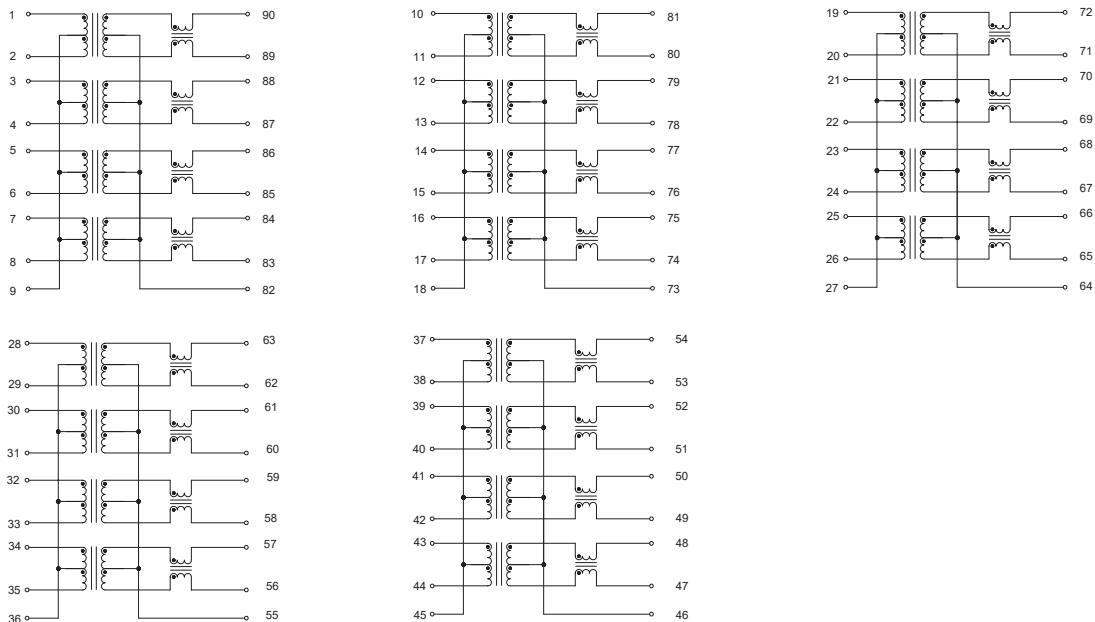
Electrical Specification@25°C Operating Temperature 0 to 70°C

Part Number	Insertion Loss (dB Max) 1-125MHz	Return Loss (dB Typical) MHz				CMRR (dB Min) MHz		Cross talk (dB Min) MHz		Isolation Voltage (Vrms Min)	Package
		1-30	40	50	60-80	0.1-60	60-100	0.1-60	60-100		
AG9001DR	-1.0	-18	-14.4	-13.1	-12	-42	-40	-40	-38	1500	A

Dimension : mm[inch]+/-0.25[0.01]



Schematic



T1/CEPT/ISDN-Pri Module

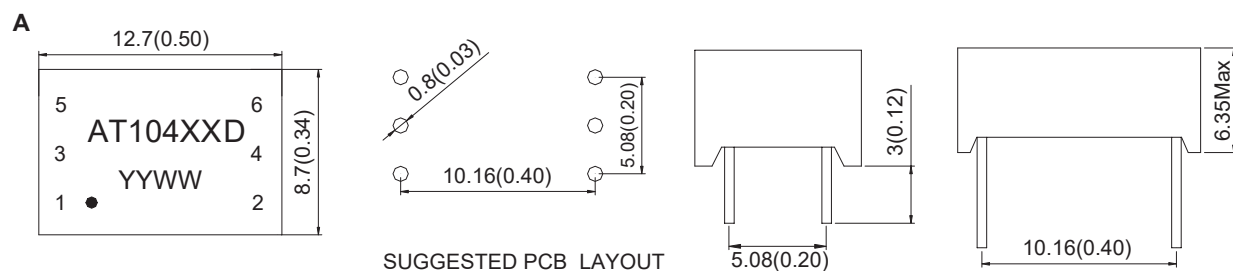
FEATURES

Compliant with CCITT&FCC standard.
 Provide 1500Vrms isolation
 RoHS compliant

Electrical Specification@25°C Operating Temperature 0 to 70°C

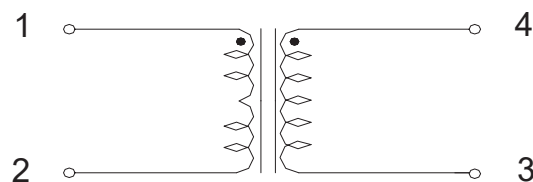
Part Number	Turn Ratio	OCL (mH Min)	LL (uH Max)	C _{ww} (pF Max)	DCR Pri (Ohm Max)	DCR Sec (Ohm Max)	Primary pins	Package
AT10401D	1CT:1CT	2.5	0.5	40	0.7	0.7	1-2	A

Dimension : mm[inch]+/-0.25[0.01]



Schematic

AT10401D



T1/CEPT/ISDN-Pri Module

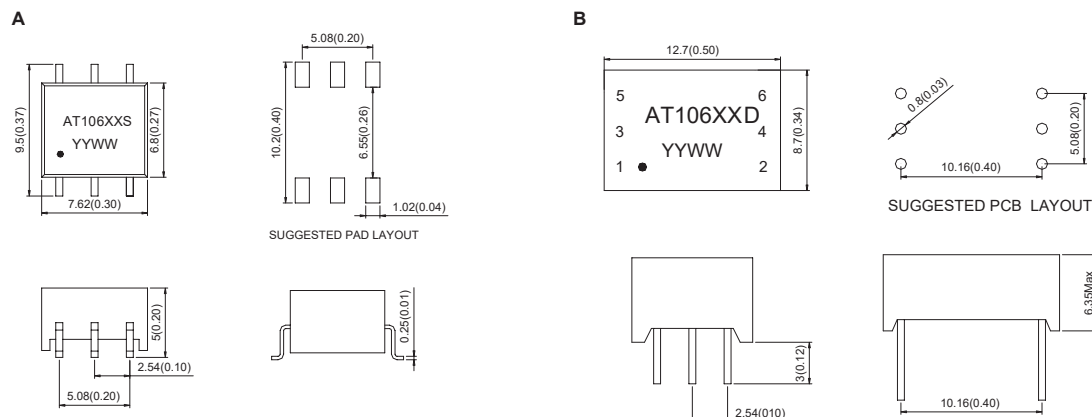
FEATURES

Compliant with CCITT&FCC standard.
Provide 1500Vrms isolation
RoHS compliant

Electrical Specification@25°C Operating Temperature 0 to 70°C

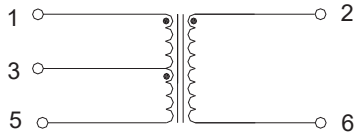
Part Number	Turn Ratio	OCL (mH Min)	LL (uH Max)	C _{ww} (pF Max)	DCR Pri (Ohm Max)	DCR Sec (Ohm Max)	Primary pins	Package
AT10601S	1:2CT	1.2	0.5	40	0.7	1.3	2-6	A
AT10602S	1.26CS:1	1.5	0.8	25	0.7	0.5	5-6	A
AT10603S	1:1.15CT	1.5	0.6	35	0.7	0.9	2-6	A
AT10604S	1:1/1.26	1.5	0.4	35	0.7	0.9	1-2	A
AT10605S	1:1.36CT	1.2	0.8	35	0.7	0.9	2-6	A
AT10606S	1CT:1CT	1.2	0.8	35	0.8	0.8	1-5	A
AT10607S	1CT:2CT	1.2	0.6	25	1	2	1-3	A
AT10608S	1:1	1.2	0.6	25	1	2	1-3	A
AT10609S	1:1	1.2	0.6	25	1	2	1-2	A
AT10601D	1:2CT	1.2	0.5	45	0.7	0.7	2-6	B
AT10602D	1:1.36CT	1.2	0.8	45	0.7	0.7	2-6	B
AT10603D	1:1.15CT	1.2	0.8	35	0.7	0.7	2-6	B
AT10604D	1:1/1.26	1	0.7	30	0.6	0.6	1-2	B
AT10605D	1.26CS:1	0.3	0.6	30	0.8	0.6	5-6	B
AT10606D	2CT:1	1	1	35	1.6	0.8	5-6	B
AT10607D	1:1	1	1.1	35	1.1	1.1	1-3	B
AT10608D	1CT:1	1.2	0.8	35	0.7	0.7	1-5	B
AT10609D	1CT:2CT	1.2	0.8	50	1	2	1-5	B

Dimension : mm[inch] +/-0.25[0.01]

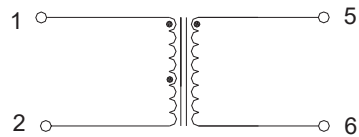


Schematic

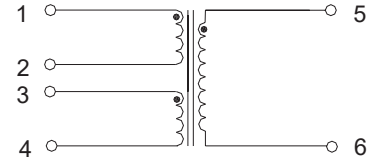
**AT10601S, AT10603S, AT10605S
AT10601D, AT10602D, AT10603D**



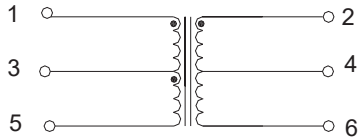
AT10609S, AT10604D



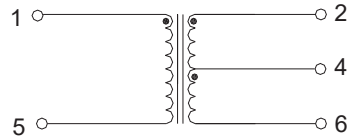
AT10602S, AT10605D



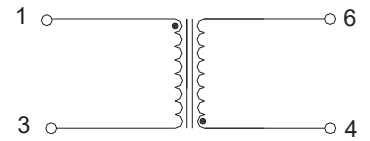
AT10606S, AT10609D



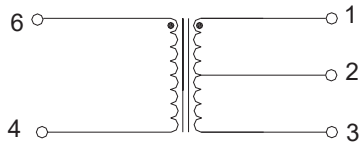
AT10606D, AT10608D



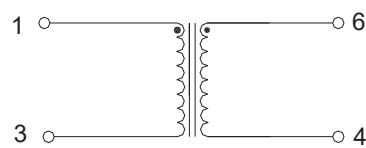
AT10607D



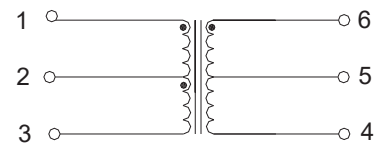
AT10607D



AT10608S



AT10607S



T1/CEPT/ISDN-Pri Module

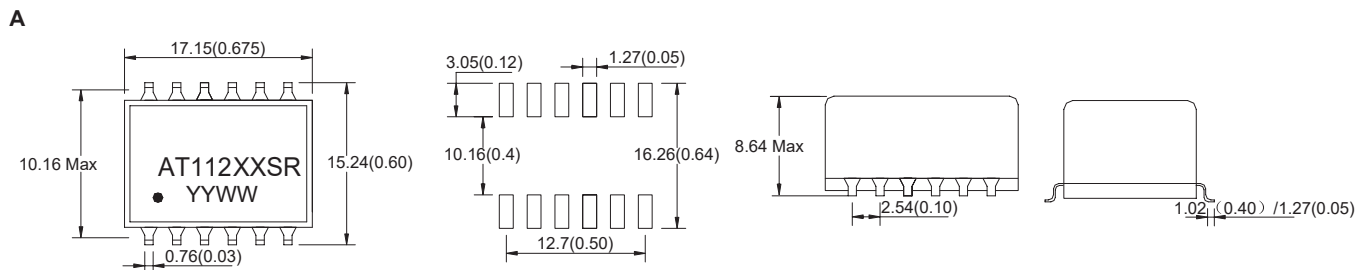
FEATURES

Compliant with CCITT&FCC standard.
Provide 1500Vrms isolation
RoHS compliant

Electrical Specification@25°C Operating Temperature 0 to 70°C

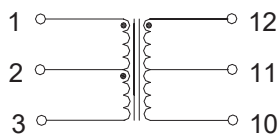
Part Number	Turn Ratio	OCL (mH Min)	LL (uH Max)	C _{ww} (pF Max)	DCR Pri (Ohm Max)	DCR Sec (Ohm Max)	Primary pins	Package
AT11201SR	1:1.15CT& 1CT:2CT	1.60&1.60	0.80&0.80	60&50	1.0&1.0	1.20&2.0	12-10,4-6	A
AT11202SR	1:1:1.26& 1:2CT	1.20&1.20	0.80&0.80	50&60	1.0&1.0	1.10&1.70	12-10,4-6	A
AT11203SR	1CT:1.15CT& 1CT:1.15CT	1.20&1.20	0.80&0.80	50&50	1.20&1.20	1.40&1.40	1-3,4-6	A
AT11204SR	1CT:2CT& 1CT:2CT	1.20&1.20	0.60&0.60	35&35	0.70&0.70	1.20&1.20	12-10,4-6	A
AT11205SR	1CT:1.36CT& 1CT:1.36CT	1.20&1.20	0.80&0.80	50&50	1.20&1.20	1.40&1.40	1-3,4-6	A
AT11206SR	1CT:1.41CT& 1CT:1.41CT	1.20&1.20	0.80&0.80	50&50	1.40&1.40	1.20&1.20	12-10,9-7	A
AT11207SR	1CT:2CT& 1CT:1.36CT	1.20&1.20	0.60&0.80	35&37	0.70&0.70	1.20&0.90	12-10,4-6	A

Dimension : mm[inch]+/-0.25[0.01]

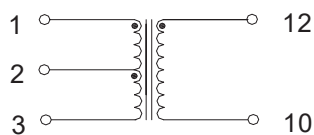


Schematic

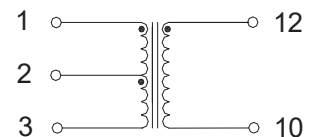
AT11201SR, AT11203SR, AT11204SR,
AT11205SR, AT11206SR



AT11202SR



AT11207SR



T1/CEPT/ISDN-Pri Module

FEATURES

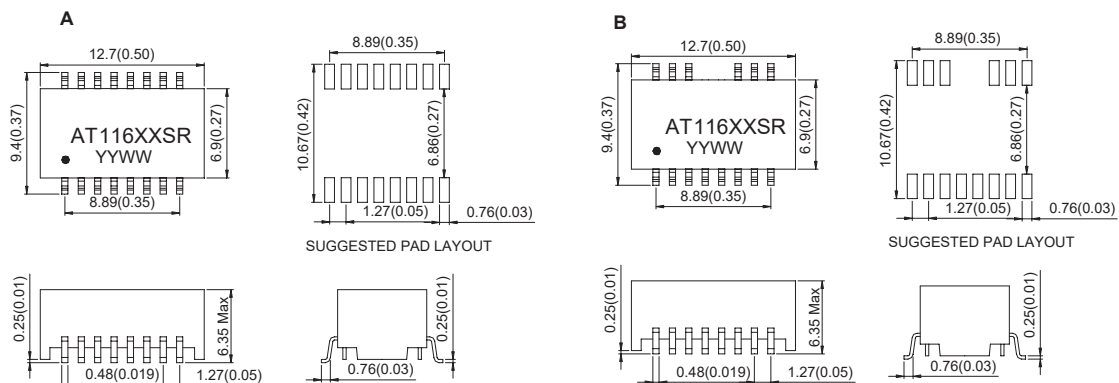
Compliant with CCITT&FCC standard.
Provide 1500Vrms isolation
RoHS compliant



Electrical Specification@25°C Operating Temperature 0 to 70°C

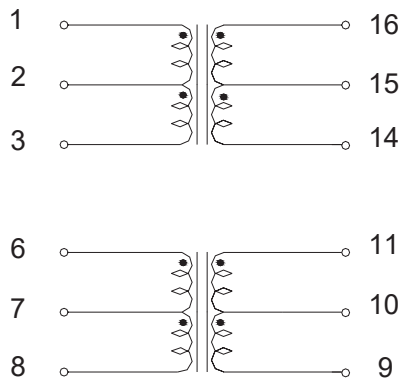
Part Number	Turn Ratio	OCL (mH Min)	LL (uH Max)	C _{ww} (pF Max)	DCR Pri (Ohm Max)	DCR Sec (Ohm Max)	Primary pins	Package
AT11601SR	1CT:2CT&1CT:2CT	1.20&1.20	0.60&0.60	30&30	0.70&0.70	1.40&1.40	16-14,6-8	A
AT11602SR	1CT:2CT&1:1.36CT	1.20&1.20	0.60&0.60	30&30	0.70&0.70	1.00&0.80	16-14,6-8	A
AT11603SR	1CT:1.15CT&1CT:1.15CT	1.20&1.20	0.60&0.60	30&30	0.70&0.70	0.70&1.00	16-14,6-8	A
AT11604SR	1: 1/1.26&1CT:2CT	1.20&1.20	0.60&0.60	30&30	0.70&0.70	0.80&1.00	16-14,6-8	A
AT11605SR	1CT:1CT&1CT:1CT	1.20&1.20	0.60&0.60	30&30	0.70&0.70	0.70&0.70	16-14,6-8	A
AT11606SR	1:1.15CT:1&1CT:2CT	1.20&1.20	0.60&0.60	30&30	0.70&0.70	0.75&0.75	16-14,6-8	A
AT11607SR	1CT:1CT&1CT:2CT	1.00&1.00	0.60&0.60	30&30	0.70&0.70	0.70&1.00	1-3,6-9	A
AT11608SR	1CT:1.41CT&1CT:1.41CT	1.00&1.00	0.60&0.60	30&30	0.70&0.70	0.90&0.90	16-14,11-9	A
AT11609SR	1CT:1CT&1CT:1.36CT	1.20&1.20	0.60&0.60	30&30	0.70&0.70	0.70&1.00	16-14,6-8	A
AT11610SR	1CT:2.42CT&1CT:2.42CT	1.20&1.20	0.60&0.60	25&25	0.70&0.70	1.20&1.20	1-3,6-8	A
AT11611SR	1CT:1.36CT&1CT:1.36CT	1.20&1.20	0.60&0.60	30&30	0.70&0.70	1.0&1.0	1-3,6-8	A
AT11612SR	1CT:1CT&1CT:2.4CT	1.00&1.00	0.80&0.80	30&30	0.85&0.85	0.85&1.0	9-11,1-3	A
AT11613SR	1:1.36CT&1:2CT	1.50&1.50	0.50&0.50	35&35	0.90&0.90	1.30&1.30	16-14,6-8	A
AT11614SR	1:1.15CT&1:2CT	1.20&1.20	0.60&0.60	30&30	0.70&0.70	0.70&1.00	16-14,6-8	A
AT11615SR	2CS:1.57/2&2CS:1.57/2	1.50&1.50	0.50&0.50	40&40	0.70&0.70	1.00&1.00	1-2,5-6	A
AT11616SR	2CT:1/1.26&2CT:1/1.26	1.50&1.50	0.50&0.50	40&40	0.70&0.70	1.00&1.00	1-3,11-9	A
AT11617SR	1:2.42CT&1:2.42CT	1.50&1.50	0.50&0.50	40&40	0.70&0.70	1.30&1.30	1-2,5-6	A
AT11618SR	1CT:1CT&1CT:2CT	1.20&1.20	0.60&0.60	30&30	0.70&0.70	0.70&1.00	1-3,11-9	A
AT11619SR	1CT:1:1&1CT:1:1	750&750	1.0&1.0	9.0&9.0	0.45&0.45	0.45&0.45	1-3,6-8	B
AT11620SR	1CT:1CT&1CT:2CT	1.20&1.20	0.60&0.60	30&30	0.70&0.70	0.70&1.00	16-14,6-8	A
AT11621SR	1:1:1&1:1:1	25&25	12&12	80&80	4.0&4.0	6.4&6.4	1-4,5-8	A

Dimension : mm[inch]+/-0.25[0.01]

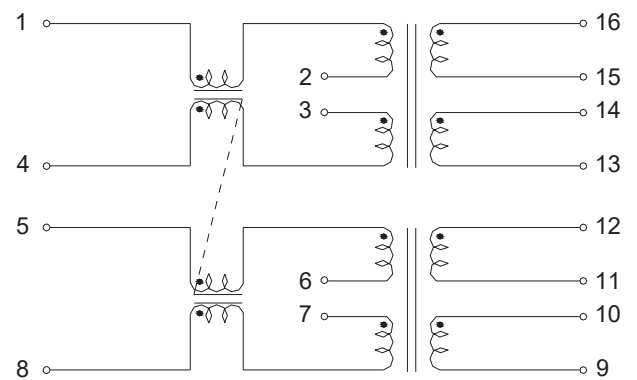


Schematic

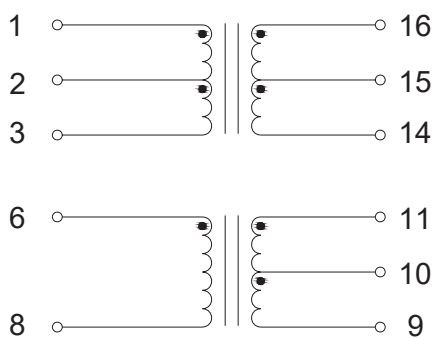
AT11601SR, AT11604SR, AT11605SR, AT11607SR,
 AT11608SR, AT11609SR, AT11610SR, AT11611SR,
 AT11612SR, AT11616SR, AT11618SR, AT11620SR



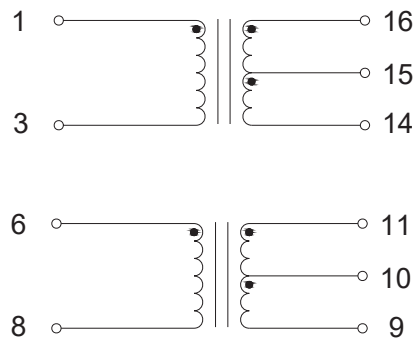
AT11621SR



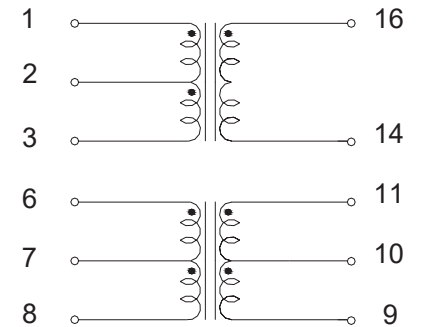
AT11602SR, FAT11613SR



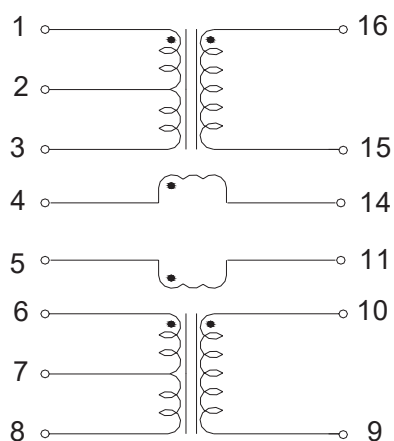
AT11614SR, AT11617SR



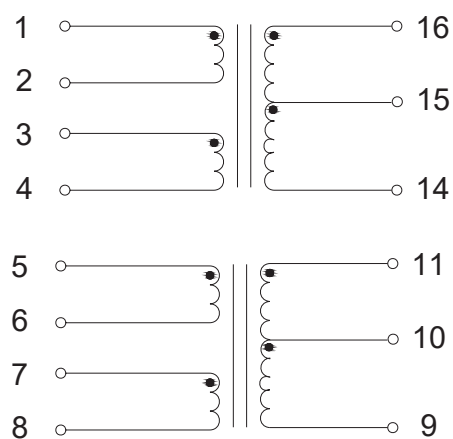
AT11603SR, AT11606SR



AT11619SR



AT11615SR



T1/CEPT/ISDN-Pri Module

FEATURES

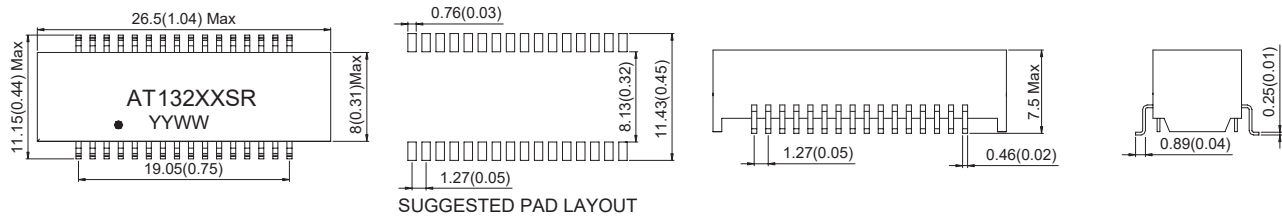
Compliant with CCITT&FCC standard.
 Provide 1500Vrms isolation
 RoHS compliant

Electrical Specification@25°C Operating Temperature 0 to 70°C

Part Number	Turn Ratio (pri:Sec ± 5%)		OCL (mH Min)		LL (uH Max)		C _{ww} (pF Max)		Primary Pins		Package
	Transmit	Receive	Trans	Rec	Trans	Rec	Trans	Rec	Transmit	Receive	
AT13201SR	1:2	1:2	1.2	1.2	0.6	0.6	30	30	1-2,5-6,9-10,13-14	3-4,7-8,11-12,15-16	A
AT13202SR	1:2	1:1	1.2	1.2	0.6	0.6	30	30	1-2,7-8,9-10,15-16	3-4,5-6,11-12,13-14	A

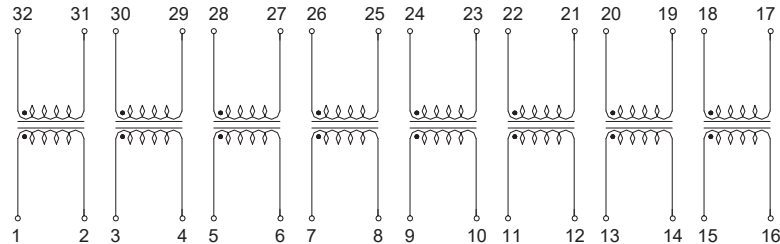
Dimension : mm[inch]+/-0.25[0.01]

A

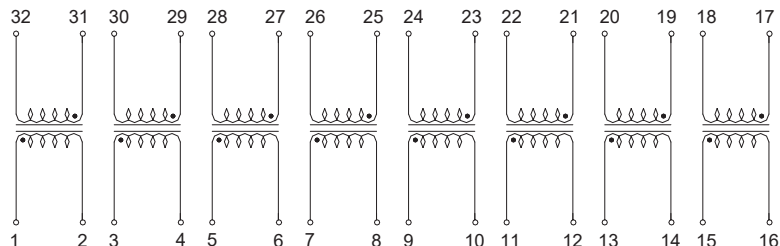


Schematic

AT13201SR



AT13202SR



T1/CEPT/ISDN-Pri Module

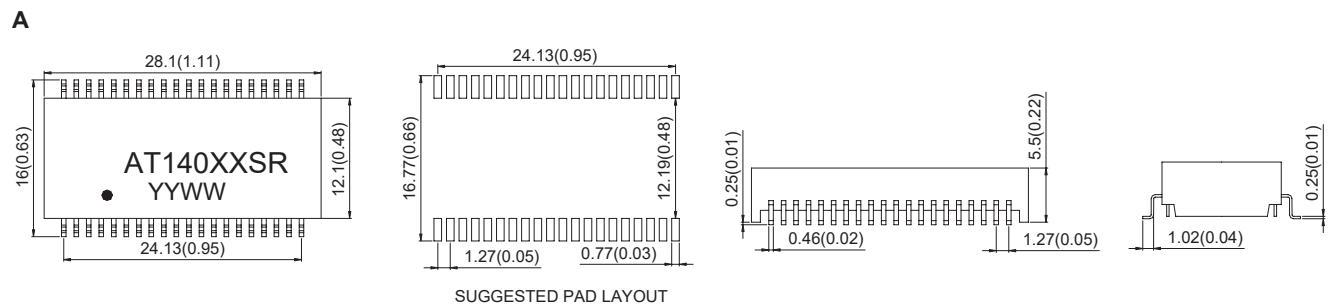
FEATURES

Compliant with CCITT&FCC standard.
 Provide 1500Vrms isolation
 RoHS compliant

Electrical Specification@25°C Operating Temperature 0 to 70°C

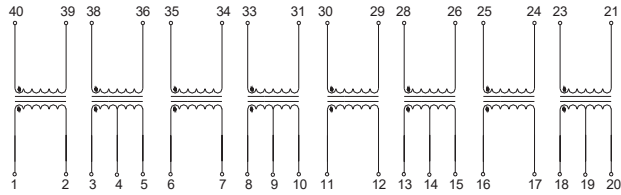
Part Number	Turn Ratio (pri:Sec ± 5%)		OCL (mH Min)		LL (uH Max)		Cww (pF Max)		Primary Pins		Package
	Transmit	Receive	Trans	Rec	Trans	Rec	Trans	Rec	Transmit	Receive	
AT14001SR	1:1.36CT	1:1.36CT	1.2	1.2	0.4	0.5	25	25	1-2,6-7,11-12,16-17	38-36,33-31,28-26,23-21	A
AT14002SR	1:1	1:1.15CT	1.2	1.2	0.6	0.6	35	35	1-2,6-7,11-12,16-17	38-36,33-31,28-26,23-21	A
AT14003SR	1:2CT	1:2CT	1.2	1.2	0.6	0.6	35	35	4-5,9-10,14-15,19-20	24-25,29-30,34-35,39-40,	A
AT14004SR	1:2CT	1:1CT	1.2	1.2	0.6	0.6	35	35	1-2,9-10,11-12,19-20	23-25,26-28,33-35,36-38,	A
AT14005SR	1:1.36CT	1:2CT	1.2	1.2	0.4	0.5	25	25	24-25,29-30,34-35,39-40	4-5,9-10,14-15,19-20	A
AT14006SR	1:2	1:2CT	1.2	1.2	0.6	0.6	35	35	1-2,6-7,11-12,16-17	21-22,26-27,31-32,36-37	A
AT14007SR	1CT:1.41	1CT:1.41	1.2	1.2	0.6	0.6	35	35	1-3,6-8,11-13,16-18	21-23,26-28,31-33,36-38	A
AT14008SR	1:2.4	1:1	1	1	0.5	0.5	35	35	1-2,8-9,11-12,18-19	24-25,27-28,34-35,37-38	A
AT14009SR	1:1/1.26	1:2CT	1.2	1.2	0.6	0.6	35	35	1-2,6-7,11-12,16-17	21-22,26-27,31-32,36-37	A
AT14010SR	1:1.15	1:1.15	1.2	1.2	0.6	0.6	35	35	1-3,6-8,11-13,16-18	4-5,9-10,14-15,19-20	A
AT14011SR	1:2	1:2	1.2	1.2	0.6	0.6	35	35	4-5,9-10,14-15,19-20	1-3,6-8,11-13,16-18	A
AT14012SR	1:2	1:1	0.8	1	0.4	0.4	30	30	1-2,6-7,11,12,16-17	3-4,8-9,13-14,18-19	A
AT14013SR	1:1.26	1:1.26	1.2	1.2	0.5	0.5	25	25	1-3,6-8,11-13,16-18	4-5,9-10,14-15,19-20	A
AT14014SR	1:2CT	1CT:2	1.2	1.2	0.6	0.6	35	35	4-5,9-10,14-15,19-20	1-3,6-8,11-13,16-18	A
AT14015SR	1:1	1:2CT	1.2	1.2	0.6	0.6	35	35	1-2,6-7,11-12,16-17	21-23,26-28,31-33,36-38	A
AT14016SR	1:2.4	1:2.4	1.2	1.2	0.6	0.6	35	35	1-3,6-8,11-13,16-18	4-5,9-10,14-15,19-20	A
AT14017SR	1:2	1:2	1.5	1.5	0.5	0.5	35	35	1-2,6-7,11-12,16-17	3-4,8-9,13-14,18-19	A
AT14018SR	1:1.26CT	1:1.26CT	1.2	1.2	0.6	0.6	35	35	4-5,9-10,14-15,19-20	24-25,29-30,34-35,39-40	A
AT14019SR	1:2CT	1CT:2	1.2	1.2	0.6	0.6	35	35	4-5,9-10,14-15,19-20	1-3,6-8,11-13,16-18	A

Dimension : mm[inch]+/-0.25[0.01]

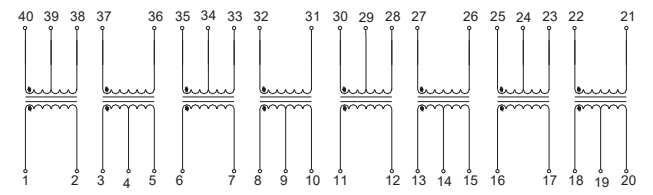


Schematic

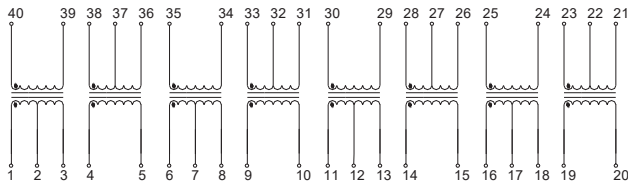
AT14001SR, AT14002SR, AT14015SR



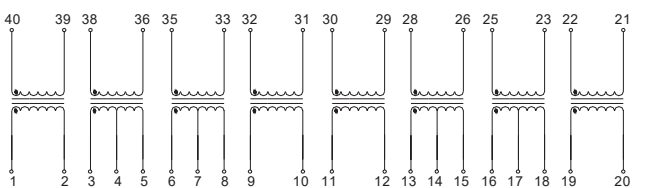
AT14004SR, AT14009SR



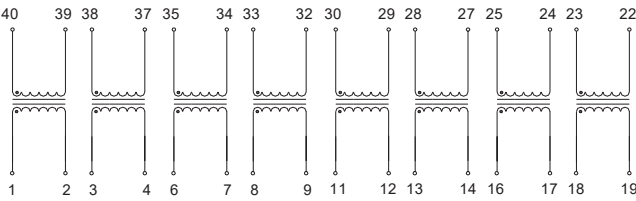
AT14003SR, AT14005SR, AT14007SR, AT14014SR, AT14018SR



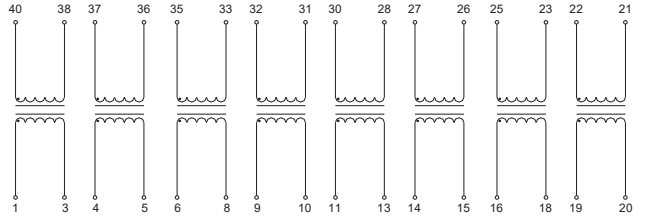
AT14006SR



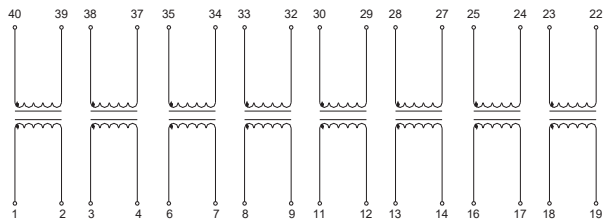
AT14012SR



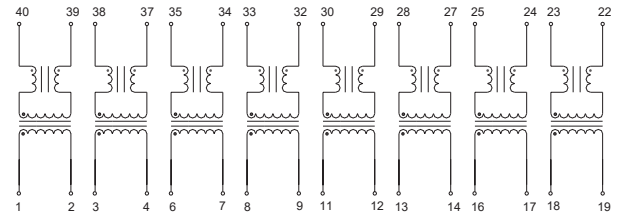
AT14010SR, AT14011SR, AT14013SR, AT14016SR



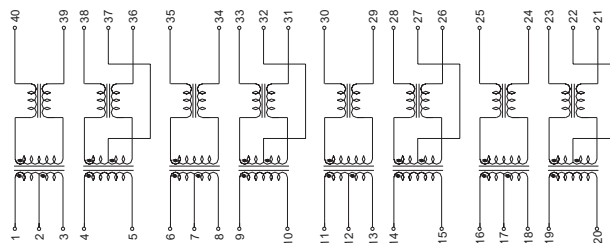
AT14008SR



AT14017SR



AT14019SR



T1/CEPT/ISDN-Pri Module

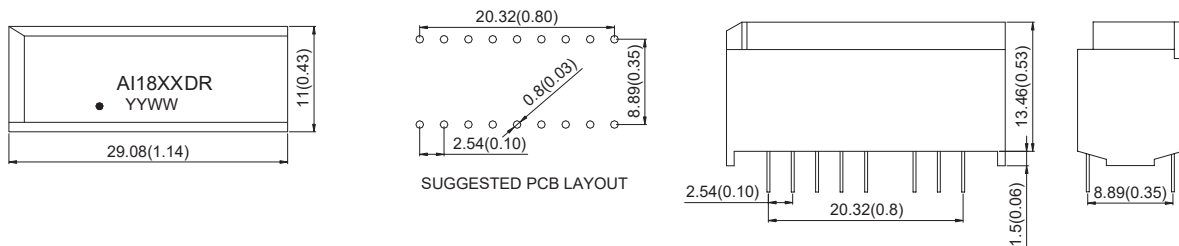
FEATURES

Compliant with of CCITT 1.430 standard
 Compatible with industry standard footprints
 Developed for enhanced EMC performance
 Isolation:1500Vrms.
 RoHS compliant

Electrical Specification@25°C Operating Temperature 0 to 70°C

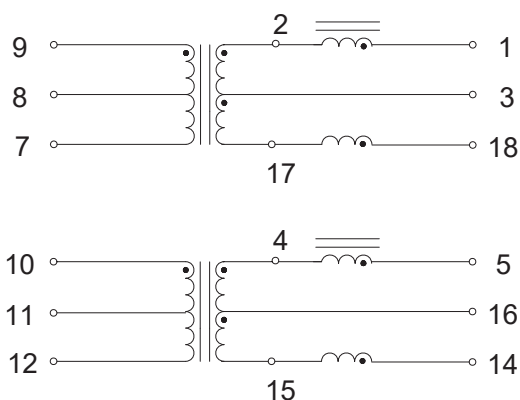
Part Number	Transformer							Choke		ΔIdc mA Max	Secondary Pins
	Ratio+2% Pri:Sec	OCL Pri (mH Min)	LL Sec (uH Max)	C _{ww} (pF Max)	CDPri (pF Max)	DCR Pri (Ω ±25%)	DCRSec (Ω Max)	OCL (mH Min)	DCR Ω		
AI1801DR	1CT:1CT	30	10	150	100	3.2	3.2(+25%)	4.7	1.2	5	9-7,10-12
AI1802DR	1CT:2CT	30	30	150	100	3.2	5.4(+25%)	4.7	1.2	5	9-7,10-12
AI1803DR	1CT:2.5CT	30	30	150	100	3.2	9	4.7	1.2	5	9-7,10-12
AI1804DR	1CT:2	30	30	150	100	3.2	5.4(+25%)	4.7	1.2	5	9-10,8-11

Dimension : mm[inch]+/-0.25[0.01]

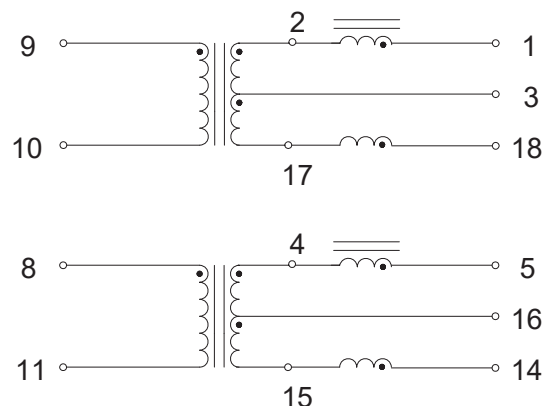


Schematic

AI1801DR, AI1802DR, AI1803DR



AI1804DR



T1/CEPT/ISDN-Pri Module

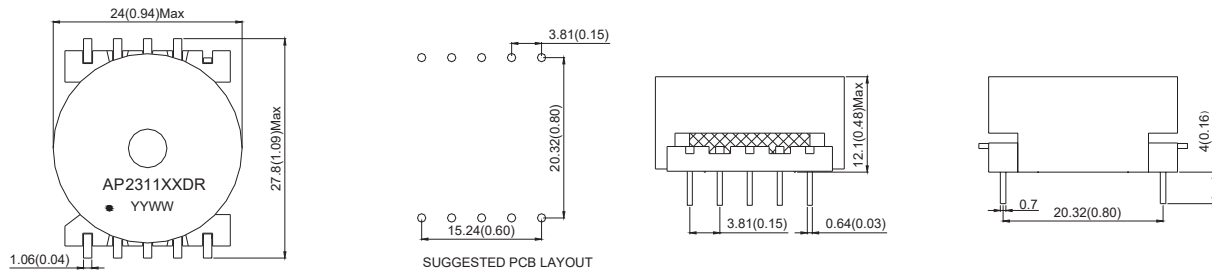
FEATURES

Meet IEC950
 Custom Variations
 RoHS compliant

Electrical Specification@25°C Operating Temperature 0 to 70°C

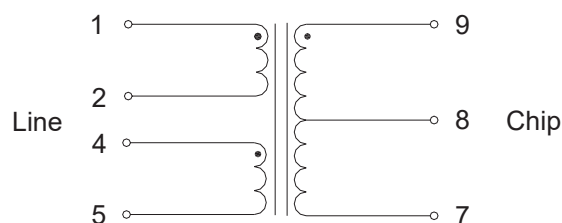
Part Number	Turn Ratio	OCL @10KHz 0.1Vrms Line	Leakage Inductance @100KHz, 0.1Vrm 9-7 with	DC Resistance		Isolation Voltage (Vrms)
	@10KHz 1Vrms, Line:Chip	(Idc=60mA)	1&2&4&5 shorted	Line	Chip	
AP231101DR	1.5:1.0± 3%	25.65-29.0mH	85uH Max	20.0ΩMax	3.0ΩMax	2000
AP231102DR	1.25:1.0± 3%	26.5-29.5mH	85uH Max	12.4ΩMax	7.0ΩMax	2000

Dimension : mm[inch]+/-0.25[0.01]

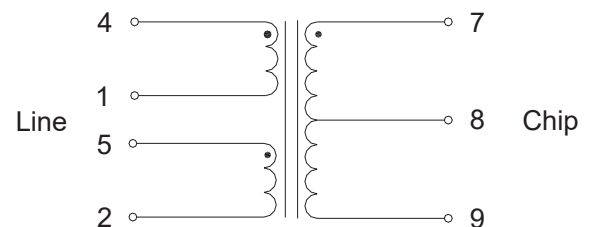


Schematic

AP231101DR



AP231102DR



XDSL Magnetics

FEATURES

Excellent THD performance in a small footprint
 Meet IEC950 supplementary insulation requirements
 RoHS compliant



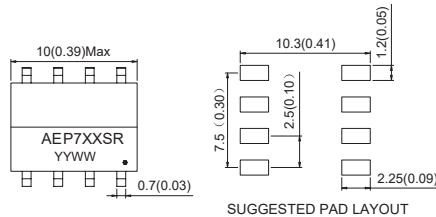
Electrical Specification@25°C Operating Temperature 0 to 70°C

Part Number	Turn Ratio @10KHz,0.1Vrms	OCL @10KHz,0.1Vrms	Leakage Inductance @100KHz,0.1Vrms	DC Resistance (Max)	
	Pri.:Sec.	(1-4)with(2+3)shorted	(1-4)with(2+3),(8+5+7+6)shorted	1-4	8-6
AEP701SR	0.408:1.0±2%	1100uH±7%	10.5uH Max	3.0Ω	5.5Ω
AEP902SR	0.9:1.0±2%	1.0mH±8%	10.0uH Max	1.6Ω	2.0Ω
AEP903SR	0.95:1.0±1%	750uH±3%	10.0uH Max	1.5Ω	1.5Ω

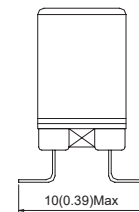
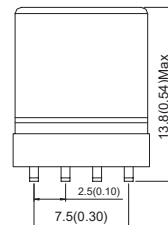
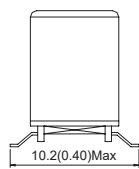
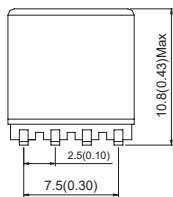
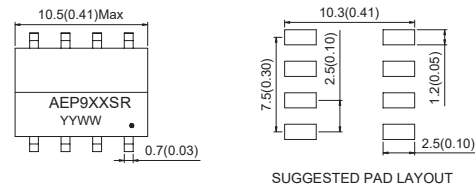
Part Number	THD	Interwinding Capacitance	Longitudinal Balance	Isolation Voltage
		@10KHz 0.1Vrms		
AEP701SR	-80dB Max	35pF Max	-45dB Max	1875
AEP902SR	-80dB Max	50pF Max	-45dB Max	1875
AEP903SR	-80dB Max	50pF Max	-45dB Max	1875

Dimension : mm[inch]+/-0.25[0.01]

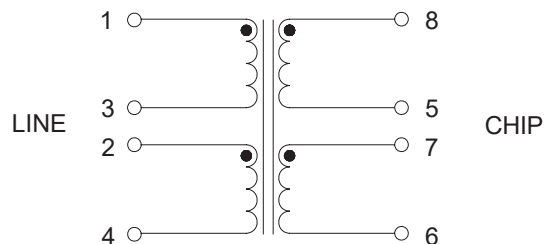
AEP701SR



AEP902SR, AEP903SR



Schematic



XDSL Magnetics

FEATURES

Meet IEC950
 Custom Variations
 Isolation Voltage 1875 Vrms
 RoHS compliant

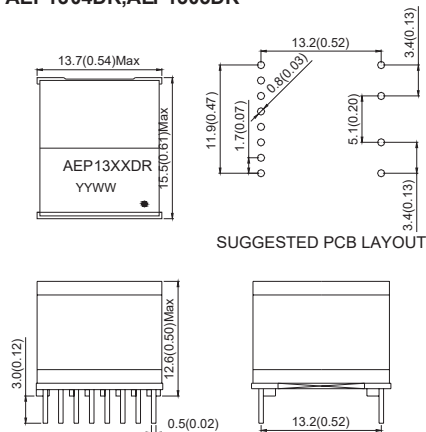


Electrical Specification@25°C

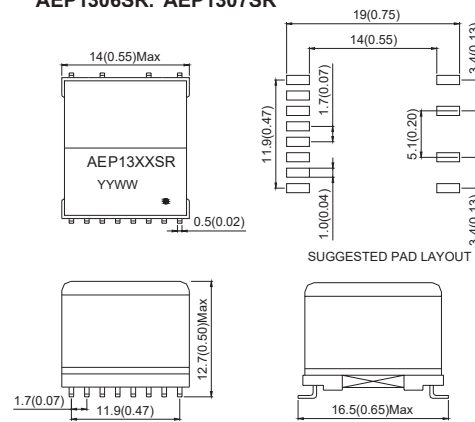
Part Number	Turn Ratio @10KHz,0.1Vrms		OCL @10KHz,0.1Vrms	Leakage Inductance @10KHz,0.1Vrms	Interwinding Capacitance @100KHz, 0.1Vrms	DC Resistance (Max)			THD	Longitudinal Balance
	1-4:9-16	5-8:9-16	(9-16) with (11+14)shorted	(9-16) with (11+14) (1+2+3+4+5+6+7+8)shorted		9-16	1-4	5-8		@35KHz-650KHz
AEP1304DR	1:4±2%	1:2 ±2%	700uH ±6%	30uH Max	50pF Max	3.5Ω	0.98Ω	1.74Ω	-80dB Max	55dB Max
AEP1305DR	1:4±2%	1:2 ±2%	400uH ±6%	15uH Max	35pF Max	1.4Ω	2.5Ω	0.7Ω	-80dB Max	55dB Max
AEP1306SR	1:1±3%	1:4.25 ±3%	700uH ±6%	30uH Max	50pF Max	3.5Ω	0.98Ω	1.74Ω	-80dB Max	55dB Max
AEP1307SR	1:1±3%	1:4.25 ±3%	400uH ±6%	15uH Max	35pF Max	1.4Ω	2.5Ω	0.7Ω	-80dB Max	55dB Max

Dimension : mm[inch]+/-0.25[0.01]

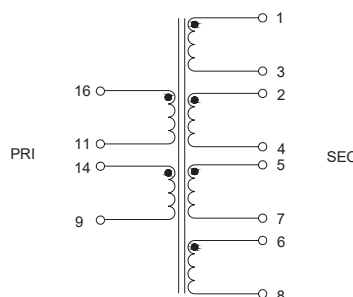
AEP1304DR,AEP1305DR



AEP1306SR. AEP1307SR



Schematic



RJ+45

FEATURES

Compliant with IEEE 802.3 standard.
Small Package
RoHS compliant

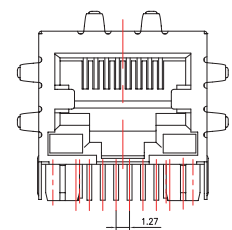
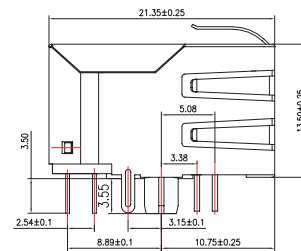
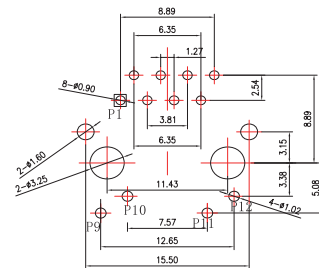
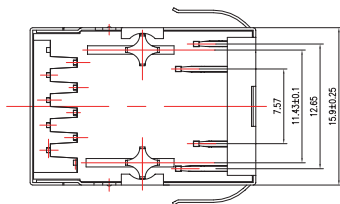


Electrical Specification@25°C Operating Temperature 0 to 70°C

Part Number	Insertion loss (dB max) 1-125MHz	Return loss (dB typical) MHz				CMRR (dB min) MHz		Cross talk (dB min) MHz		Isolation Voltage (Vrms min)	Package
		1-30	40	50	60-80	0.1-60	60-100	0.1-60	60-100		
ARJ1W01	-1.1	-18	-14.4	-13.1	-12	-42	-40	-40	-38	1500	A
ARJ1N01	-1.1	-18	-14.4	-13.1	-12	-42	-40	-40	-38	1500	B
ARJ4W01	-1.1	-18	-14.4	-13.1	-12	-42	-40	-40	-38	1500	C
ARJ4N01	-1.1	-18	-14.4	-13.1	-12	-42	-40	-40	-38	1500	D

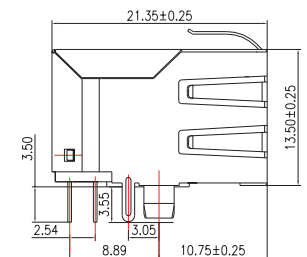
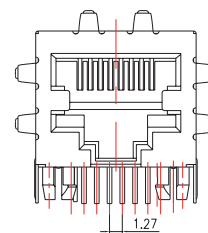
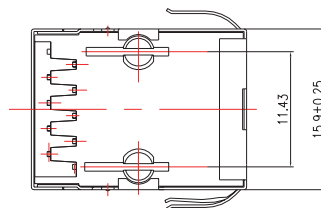
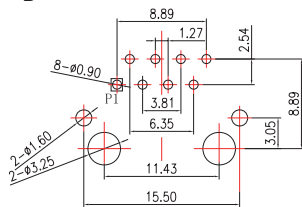
Dimension : mm[inch]+/-0.25[0.01]

A



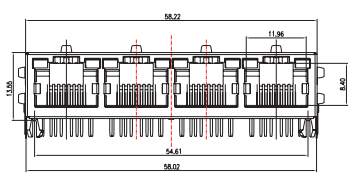
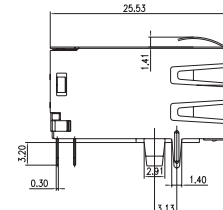
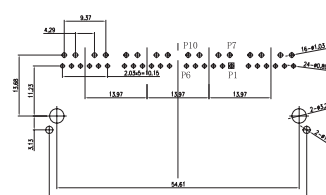
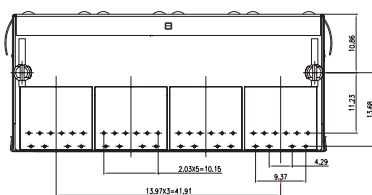
Recommend hole layout to PCB (Product assembly surface)
All dimensions are based on the center line

B

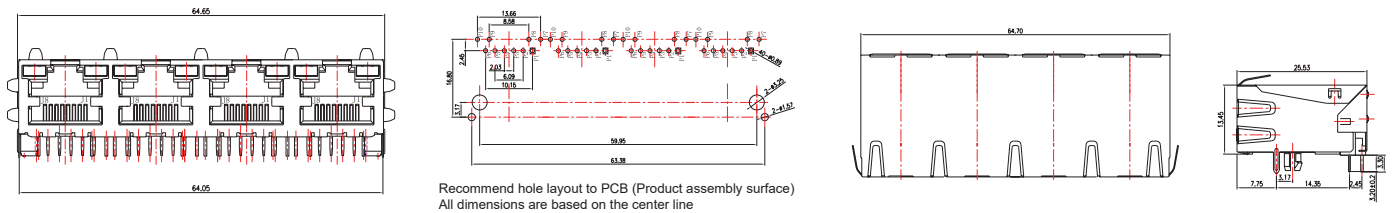


Recommend hole layout to PCB (Product assembly surface)
All dimensions are based on the center line

C

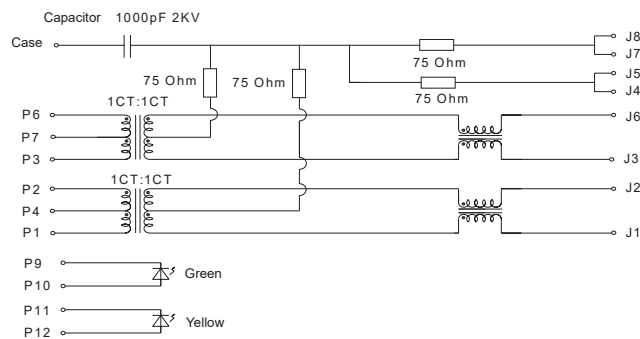


D

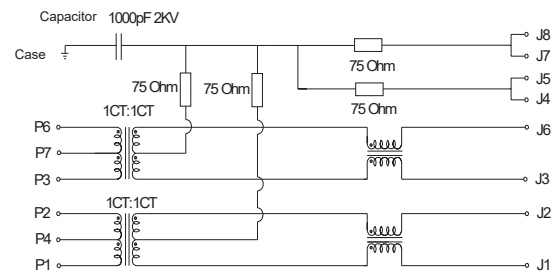


Schematic

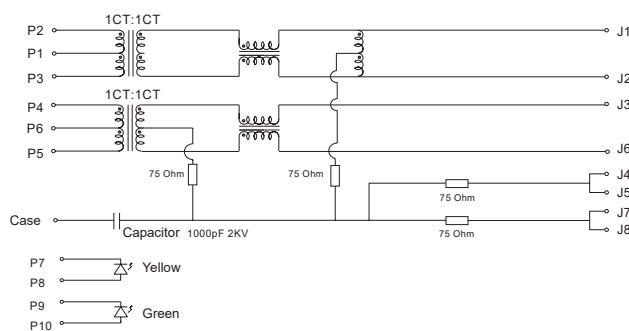
ARJ1W01



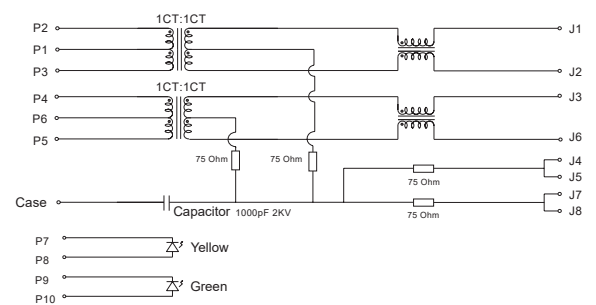
ARJ1N01



ARJ4W01



ARJ4N01





CONTRA-Solution

Member of Alliance Group GmbH

Alliance Group GmbH Vogelanger 15 82319 Starnberg / Germany

