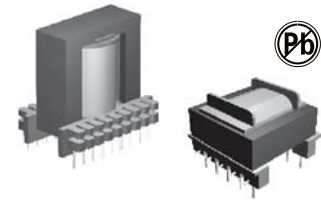


SWITCHING TRANSFORMERS AEE, AEI SERIES



FEATURES

Possessing of high permeability
High saturation flux density
Low loss, at 100°C the power loss goes bottom

OPTIONS

Bulk packaging is standard
Custom design available

COMMON APPLICATIONS

Drive transformers
Main transformers
Smoothing chokes
General purpose use

ELECTRICAL CHARACTERISTICS

Part No.	Type	No. of FAERterminal pin	Dimensions(mm)							Max. output [VA]
			Max A	Max B	Max C	±0.3 D	±0.5 E	±0.1 F		
AEI 8.3-A	V	6	8.5	8.5	9.0	2.5	6.0	0.5	3	
AEE 8.3-B	H	6	8.5	8.5	7.0	2.5	6.0	0.5	3	
AEE 8.3-C	H	4	8.5	9.5	9.0	5.0	6.8	0.5	3	
AEI 10-A	V	8	10.5	11.0	11.0	2.5	8.0	0.5	5	
AEI 10-B	H	8	11.0	13.0	10.5	2.5	10.5	0.5	5	
AEI 10-C	H	4	10.0	9.5	10.0	5.0	6.8	0.5	5	
AEI 12.5-A	V	10	13.0	13.0	10.0	2.5	7.5	0.6	8	
AEE 12-A	H	4	12.5	11.0	12.5	8.0	9.0	0.6	8	
AEE 13-A	V	10	13.5	13.0	12.0	2.5	8.7	0.6	9	
AEI 14-A	V	6	14.5	14.5	13.0	3.5	11.0	0.6	15	
AEE 16-A	V	6	16.5	13.5	13.0	3.0	9.0	0.6	25	
AEE 16-B	H	8	16.5	14.5	15.0	3.0	11.0	0.6	25	
AEE 16-C	H	8	16.5	14.5	15.0	3.5	12.0	0.6	25	
AEE 16-D	V	10	16.5	13.5	14.5	3.25	10.5	0.6	25	
AEE 16-F	H	10	16.5	19.0	14.0	3.2	15.5	0.8	25	
AEEL 16-A	V	10	22.0	16.5	30.0	4.0	10.3	0.6	25	
AEE 19-A	V	6	20.0	18.0	18.0	4.1	14.0	0.7	35	
AEE 19-B	V	6	20.0	16.0	18.0	4.7	11.6	0.6	35	
AEE 19-C	H	8	20.0	18.0	16.5	3.8/5	12.5	0.7	35	
AEEL 19-A	V	8	20.0	20.5	32.0	3.8/4.8	15.0	0.8	35	
AEEL 19-B	H	6	19.5	32.0	13.0	5	24.2	0.8	35	
AEEL 19-C	V	10	23.0	16.5	32.0	4	10.0	0.8	35	
AEE 20-A	H	8	20.5	19.0	13.0	5	15.0	0.8	35	
AEE 22-A	V	10	22.5	16.5	20.0	4	10.2	0.8	45	
AEE 22-B	V	8	22.5	17.0	20.0	5	12.4	0.8	45	
AEE 22-C	H	9	22.5	24.5	16.5	3.5/5	17.2	0.8	45	
AEE 25-A	V	8	25.5	18.0	22.0	5	12.4	0.8	65	
AEE 25-B	V	10	26.0	20.5	22.0	5	15.2	0.8	65	
AEE25-C	H	10	27.0	24.0	24.0	4.0/5	14.6	0.8	65	
AEEL 25-A	H	14	27.5	33.5	21.0	4.0	27.1	0.8	65	

Part No.	Type	No. of FAERterminal pin	Dimensions(mm)							Max. output [VA]
			Max A	Max B	Max C	±0.3 D	±0.5 E	±0.1 F		
AEL 25-B	V	14	27.5	21.0	35.0	4.0	15.0	0.8	65	
AEI 28-A	V	12	29.5	25.0	24.0	5.0	17.5	0.8	100	
AEI 28-B	V	10	28.5	25.0	35.0	5.0	20.0	0.8	100	
AEI 28-C	H	8	28.5	25.0	25.0	5.0	17.5	0.8	100	
AEI 30-A	V	10	31.0	22.0	26.0	5.0	17.6	0.8	155	
AEI 30-B	V	12	31.0	26.0	26.0	5.0	20.0	0.8	155	
AEE 30-A	H	10	30.5	30.0	20.5	5.0	25.0	0.8	155	
AEE 30-B	H	12	30.5	30.0	20.5	5.0	25.0	0.8	155	
AEI 33-A	V	14	34.0	28.0	30.0	5.0	22.5	0.8	200	
AEI 33-B	V	12	34.0	28.0	30.0	5.0	22.5	0.8	200	
AEI 33-C	V	16	39.0	29.0	30.0	5.0	22.5	0.8	200	
AEE 35-A	H	12	38.0	30.0	26.0	3.8/5.1	22.0	0.8	215	
AEE 35-B	V	10	35.5	26.0	28.0	5.0	20.0	0.8	215	
AEE 35-C	V	14	35.5	26.0	28.0	5.0	20.0	0.8	215	
AEEL 35-A	V	15	36.5	27.5	50.0	5.0	22.5	0.8	215	
AEI 35-A	V	12	35.5	28.5	29.0	5/7.5	20.0	1.0	215	
AEI 40-A	V	12	40.5	29.0	32.0	5.0	22.5	0.8	345	
AEI 40-B	H	12	40.5	37.0	27.0	5.0	28.2	1.0	345	
AEI 40-C	V	16	42.0	28.0	35.0	5.0	22.5	0.8	345	
AEI 40-D	H	14	40.5	35.0	29.0	5.0	25.8	0.8	345	
AEE 42-A	H	16	44.5	42.0	41.5	5.0	34.0	1.0	400	
AEE 42-B	H	12	47.0	42.0	39.5	5/7.5	33.0	1.0	400	
AEE 42-C	V	18	46.0	32.5	46.0	5.0	27.5	1.0	400	
AEE 42-D	V	12	46.0	42.5	37.0	7.4	36.4	1.0	420	
AEE 42-E	V	12	43.0	40.5	45.0	5.0	32.5	1.0	420	
AEE 42-F	H	17	43.0	47.0	45.0	2.5/5	37.7	1.0	420	
AEE 42-G	V	18	46.0	38.0	47.0	5.0	30.0	1.0	420	
AEE 50-A	V	18	51.0	40.0	40.0	5.0	30.5	1.0	500	
AEE 55-A	H	20	56.0	55.0	50.5	5/7.5	45.2	1.0	814	

Note: The output power is only for forward model and the frequency at 100kHz

PHYSICAL CHARACTERISTICS

