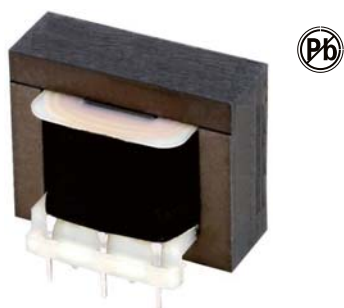


CONCENTRIC AND SPLIT BOBBIN VERTICAL PROFILE PLUG-IN TRANSFORMERS



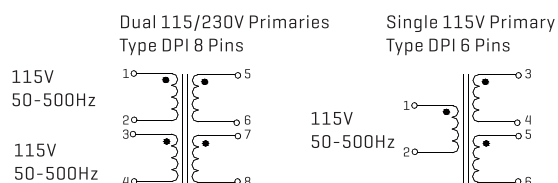
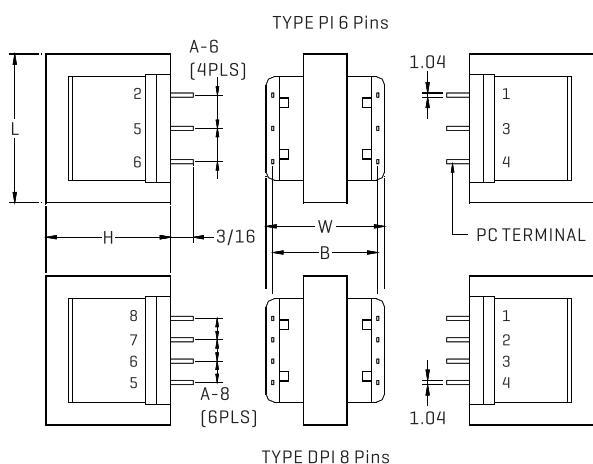
for PC board power isolation

PI SERIES CONCENTRIC VERTICAL MOUNT models provide operation frequencies from 50 to 500Hz. All parts meet RoHS compliance.

FEATURES

- Power – 1.0VA to 24VA
- Dielectric Strength – 1500V RMS HIPOT
- Vacuum impregnated
- Insulation – Class B insulation (130 °C)
- Primaries – Single or dual primaries (115V or 115/230V – 50-500Hz)
- Secondaries – series or parallel Secondary

PHYSICAL CHARACTERISTICS



ELECTRICAL CHARACTERISTICS AT 25°C

Part Number	VA	Secondary RMS Rating		
		Series V.C.T @ mA	Parallel V @ mA	
APG-10-90	1.0	10 @ 90	5 @ 180	
APG-10-120	1.2	10 @ 120	5 @ 240	
APG-10-440	4.4	10 @ 440	5 @ 880	
APG-10-1000	10	10 @ 1000	5 @ 2000	
APG10-2400	24	10 @ 2400	5 @ 4800	
APG-12-70	1.0	12.6 @ 70	6.3 @ 140	
APG-12-100	1.2	12.6 @ 100	6.3 @ 200	
APG-12-350	4.4	12.6 @ 350	6.3 @ 700	
APG-12-800	10	12.6 @ 800	6.3 @ 1600	
APG-12-2000	24	12.6 @ 2000	6.3 @ 4000	
APG-16-55	1.0	16 @ 55	8 @ 110	
APG-16-75	1.2	16 @ 75	8 @ 150	
APG-16-260	4.4	16 @ 260	8 @ 520	
APG-16-640	10	16 @ 640	8 @ 1280	
APG-16-1500	24	16 @ 1500	8 @ 3000	
APG-20-45	1.0	20 @ 45	10 @ 90	
APG-20-60	1.2	20 @ 60	10 @ 120	
APG-20-220	4.4	20 @ 220	10 @ 440	
APG-20-500	10	20 @ 500	10 @ 1000	
APG-20-1200	24	20 @ 1200	10 @ 2400	
APG-24-35	1.0	24 @ 35	12 @ 70	
APG-24-50	1.2	24 @ 50	12 @ 100	
APG-24-180	4.4	24 @ 180	12 @ 360	
APG-24-450	10	24 @ 450	12 @ 900	
APG-24-1000	24	24 @ 1000	12 @ 2000	
APG-28-30	1.0	28 @ 30	14 @ 60	
APG-28-40	1.2	28 @ 40	14 @ 80	
APG-28-160	4.4	28 @ 160	14 @ 320	
APG-28-360	10	28 @ 360	14 @ 720	
APG-28-800	24	28 @ 800	14 @ 1600	
APG-34-25	1.0	34 @ 25	17V @ 50	
APG-34-35	1.2	34 @ 35	17V @ 70	
APG-34-125	4.4	34 @ 125	17V @ 250	
APG-34-300	10	34 @ 300	17V @ 600	
APG-34-700	24	34 @ 700	17V @ 1400	
APG-40-20	1.0	40 @ 20	20 @ 40	
APG-40-30	1.2	40 @ 30	20 @ 60	
APG-40-110	4.4	40 @ 110	20 @ 220	
APG-40-250	10	40 @ 250	20 @ 500	
APG-40-600	24	40 @ 600	20 @ 1200	
APG-56-15	1.0	56 @ 15	28 @ 30	
APG-56-20	1.2	56 @ 20	28 @ 40	
APG-56-80	4.4	56 @ 80	28 @ 160	
APG-56-180	10	56 @ 180	28 @ 360	
APG-56-420	24	56 @ 420	28 @ 840	
APG-120-8	1.0	120 @ 8	60 @ 16	
APG-120-10	1.2	120 @ 10	60 @ 20	
APG-120-35	4.4	120 @ 35	60 @ 70	
APG-120-85	10	120 @ 85	60 @ 170	
APG-120-200	24	120 @ 200	60 @ 400	
APG-230-4	1.0	230 @ 4	115 @ 8	
APG-230-5	1.2	230 @ 5	115 @ 10	
APG-230-20	4.4	230 @ 20	115 @ 40	
APG-230-40	10	230 @ 40	115 @ 80	
APG-230-100	24	230 @ 100	115 @ 200	

Size	VA	L	W	H	A-6 (6 pin)	A-8 (8 pin)	ML	Wgt
25	1.0	25.4	34.9	21.1	6.35	5.08	30.5	71g
37	1.2	34.9	28.6	30.2	7.92	5.08	25.4	85g
50	4.4	41.3	31.7	34.9	10.2	6.35	27.9	142g
62	10	47.6	36.5	41.3	10.2	6.35	33.0	255g
24	24	41.3	57.1	34.9	10.2	6.35	53.3	340g

ALL DIMENSIONS IN MM